

## K2 MOUNTING SYSTEMS

### Recommendations for module cable management of K2 Systems Solutions for flat and pitched roof systems

#### Flat roofs: S-Dome and D-Dome

##### REQUIRED MATERIAL

Cable Manager

ITEM NUMBER

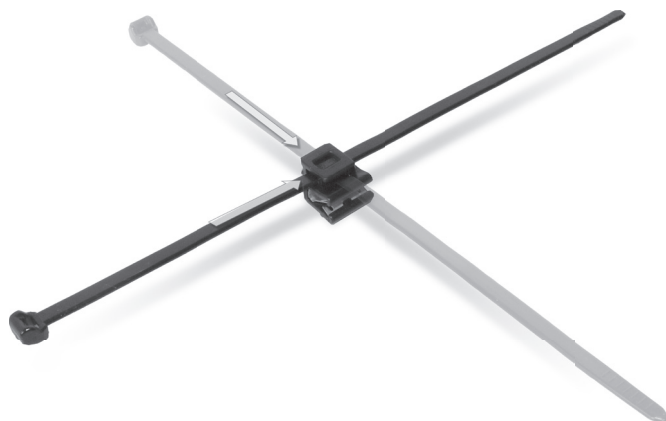
2002870

##### FEATURES

- ▶ Solar Cable Manager with connecting possibility for outdoor-installation
- ▶ L x W: 200 x 4.6 mm

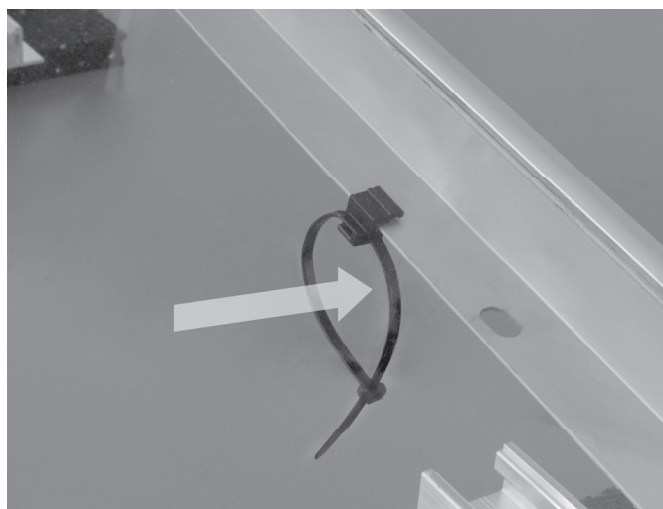
##### ASSEMBLY

1  
of 2



Cable Manager should be used in the correct position for cable routing.

2  
of 2



Slide the clip of the Cable Manager onto the module frame and insert a suitable loop for the module cable.

# Mounting systems for solar technology



## Flat roofs: S-Rock

### REQUIRED MATERIAL

Cable Clip

### FEATURES

- ▶ Tool-free assembly
- ▶ Reopening capability
- ▶ Rounded edges
- ▶ Holds up to 4 cables with Ø 6 mm diameter
- ▶ Suitable for material thickness: 1.5-2.5 mm

### ASSEMBLY

1  
of 2



### ITEM NUMBER

2002322

Cable Routing Clip

1005394

Omega Cable Clip



### Cable Routing Clip

With the narrow latch opening, insert the clip into the pre-cut opening of the S-Rock, so that the larger opening of the clip points upwards. Put the module on the S-Rock components, attach the module cable to the Cable Routing Clip before fastening the module clamps.

2  
of 2



### Omega Cable Clip

Attach the module cable to the Omega Clip. Press together the open side edges of the clip and insert into the pre-cut opening of the S-Rock. Then release pressure to fix into place.

# Mounting systems for solar technology



## Pitched roofs

### REQUIRED MATERIAL

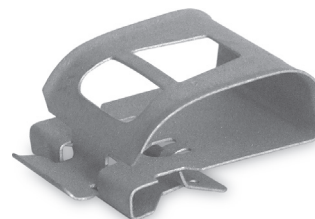
Cable Routing Clip

### FEATURES

- ▶ Tool-free assembly
- ▶ Reopening capability
- ▶ Rounded edges
- ▶ Holds up to 4 cables with Ø 6 mm diameter
- ▶ Suitable for material thickness: 1.5-2.5 mm

### ITEM NUMBER

2002322



### ASSEMBLY

1  
of 2



Slide the narrow latch opening of the Cable Routing Clip onto the inner flange of the module frame.

2  
of 2



Attach the module cable to the Cable Routing Clip before assembly.

# Mounting systems for solar technology



## Pitched roofs

### REQUIRED MATERIAL

Omega Cable Clip

### FEATURES

- ▶ Tool-free assembly
- ▶ Reopening capability
- ▶ Made of elastic polypropylene with UV stabiliser
- ▶ Suitable for many K2 mounting rails.

### ASSEMBLY

### ITEM NUMBER

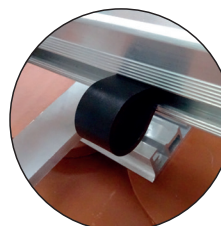
1005394



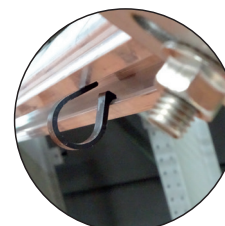
1  
of 2



Press together the ends of the Omega Cable Clip and insert with the open side positioned at the desired point on the mounting rail. Release pressure to fix into place.



SingleRail



SolidRail

2  
of 2



A cable can then be inserted into the Omega Cable Clip.



SolidRail