

solar_{edge}

SolarEdge Home Smart Switch

for inverters with SetApp configuration for ROW

V 1.1

EN Quick Installation Guide

DE Schnellinstallationsanleitung

NL Snelle installatiegids

FR Guide d'installation rapide

IT Guida rapida all'installazione

ES Guía de Instalación Rápida

CZ Průvodce rychlou instalací

HU Gyors telepítési útmutató

PL Przewodnik szybkiej instalacji

SL Navodila za hitro namestitve

SV Snabbinstallationsguide

Safety Information and Handling



[Datasheet](#)



[Training](#)



[Application Note](#)



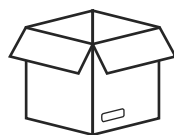
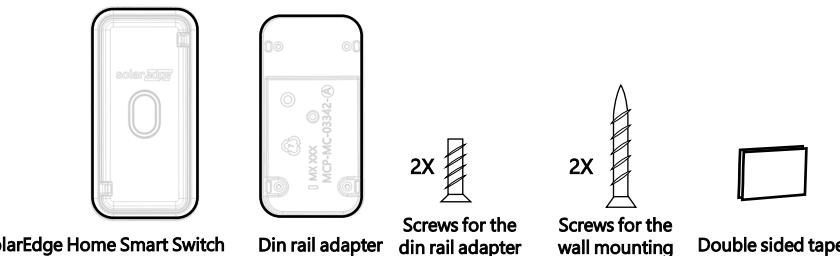
Safety Information

- For indoor use only
- Keep children away from the device
- DO NOT use with medical or life support equipment
- DO NOT use in wet or damp area
- DO NOT clean with liquid
- Test the device locally for safe operation before attempting to control it remotely
- Use Copper conductors only
- Installation in a closed metal enclosure degrades wireless performance and must be avoided



Discard this product according to local regulations or send it back to SolarEdge.

What's in the package

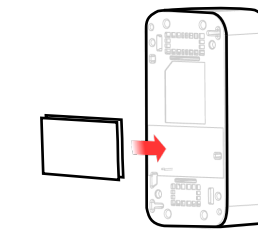


1 Mounting Options

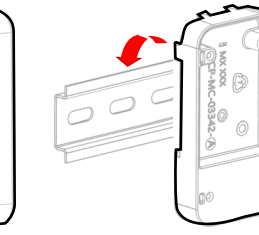
Choose one of 3 options displayed below



A. Screws



B. Double sided tape



C. Din rail adapter

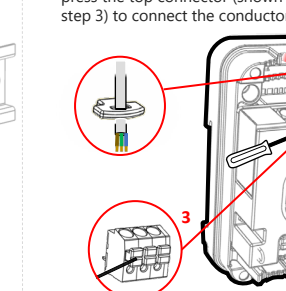


WARNING!
Installation is allowed on up to 2000 meters of altitude

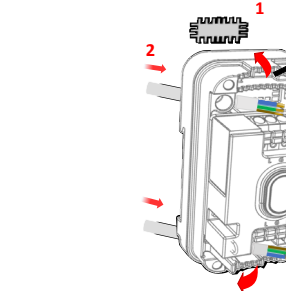
2 Cabling

Use the supplied cable rubbers to fixate cable with diameter of up to $\varnothing 4 \text{ mm}$. Pull the cable through the pull relief opening to fixate and press the top connector (shown in step 3) to connect the conductor.

Choose one of two options displayed below



A. Insert cables from top and bottom



B. Insert cables from behind



ELECTRICAL SHOCK HAZARD

About SolarEdge

SolarEdge is a global leader in smart energy technology. By deploying world-class engineering capabilities and a relentless focus on innovation, we create smart energy products and solutions that power our lives and drive future progress.

solaredge.com

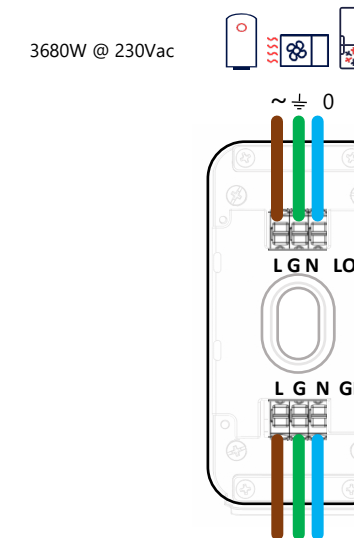
© SolarEdge Technologies, Ltd.

All rights reserved.

Version: 1.1, October 2023

Subject to change without notice.

3 Wiring



4 Pair with Inverter

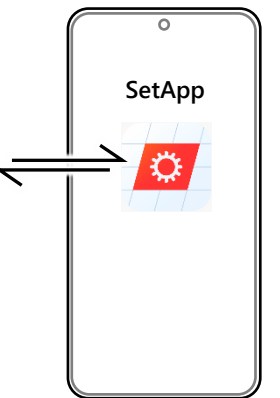
1

P 1 0



P (2 Sec)

2



5 LED Indications

3

Commissioning

Device manager

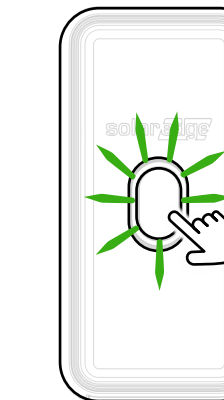
Found new devices

Add new devices

Select device

Add device parameters

Finish settings



Button Operation

- Press for <3 seconds to operate manually
- Hold >10 seconds to reset

LED Indications

Blinking Blue – scanning for a network or connection with Home Network is lost & load off

Blinking Green – scanning for a network or connection with Home Network is lost & load on

Blinking Blue 30 seconds – received request of identification

Blue – connected to Home Network & load off

Green – connected to Home Network & load on

Blinking Red – error

Flickering Blue – standby

Flickering Green 5 times – reset done

Specifications

System Requirements

- Inverter with SolarEdge Home Network wireless connection
- SolarEdge SetApp: smartphone application for connection to inverter and firmware >4.18.xx
- MySolarEdge: smartphone application for configuration and status reading
- iOS 10 or later or Android 6.0.1 or later

AC voltage	90 ~ 250 Vac
AC frequency	50/60 Hz
Switch rating	16A
Poles	1
Relay switching cycles	> 20,000
Operating hours	50,000hr
Installation altitude	2000m
Measurement accuracy	1%

Support Contact Information

If you have technical problems concerning SolarEdge products, please contact us: <https://www.solaredge.com/service/support>
Subject to change without notice.
Copyright © SolarEdge Inc.
All rights reserved. January 2023.