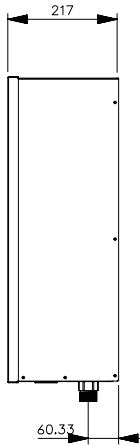
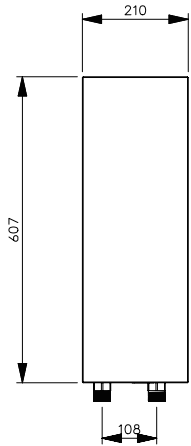
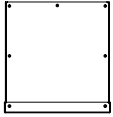
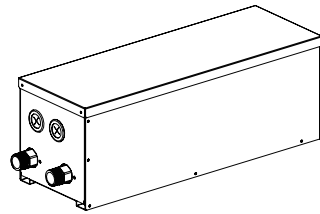
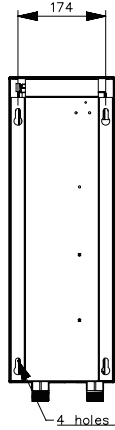


[Unit: mm]

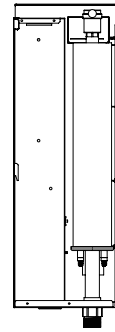
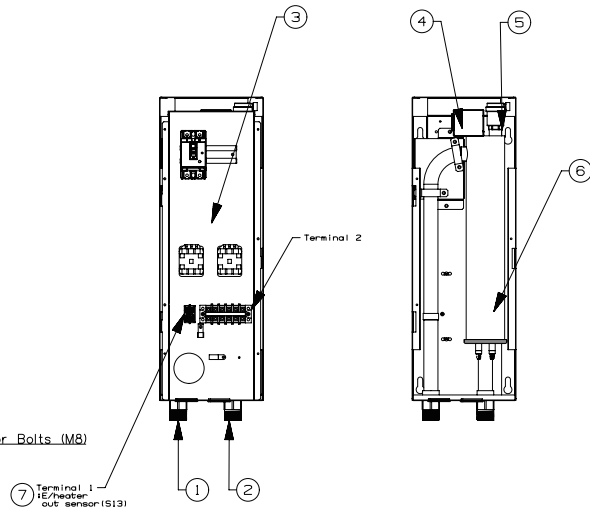
P/No. : TAY37568301



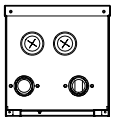
Side View



Side View



Side View



↓ Accessory(Backup Heater)

Note

1. Unit should be installed in compliance with the installation manual in the product box.
2. Unit should be grounded in accordance with the local regulations or applicable national codes.
3. All electrical components and materials to be supplied from the site must comply with the local regulations or international codes.

■ Backup Heater

7	Backup heater outlet sensor (S13)	Connect to unit(heat pump)
6	Electric Heater	Refer the related information
5	Air vent	Air purging when changing water
4	Thermal switch	Cut-off power input to E/Heater at 90℃
3	Control Box	Circuit Breaker, Magnetic Switch, Terminal Blocks
2	Entering Water Pipe	Male PT 1/2 inch
1	Leaving Water Pipe	Male PT 1/2 inch
No.	Part Name	Description