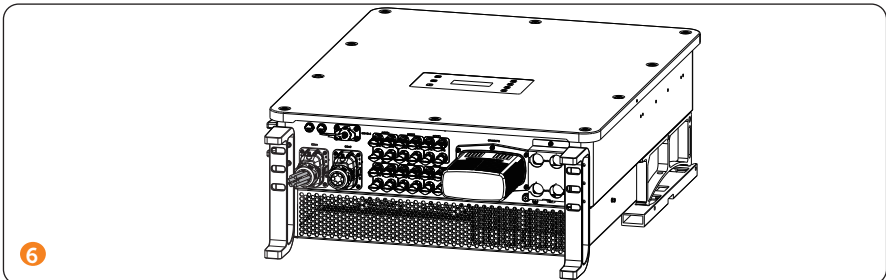
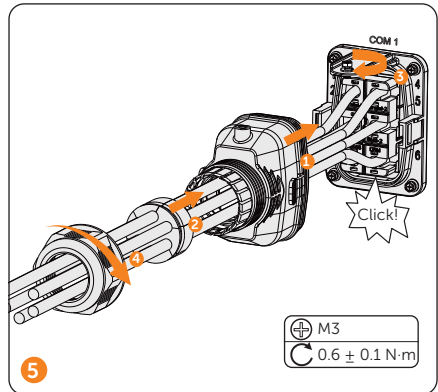
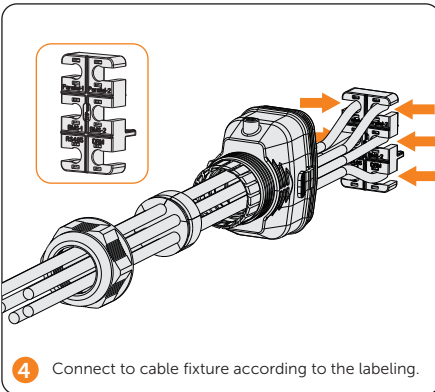
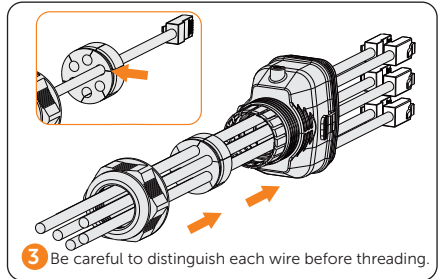
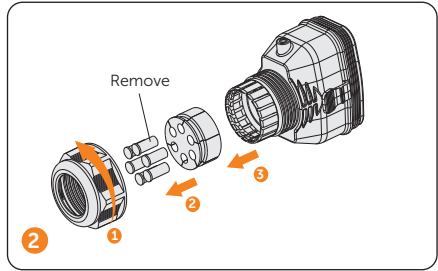
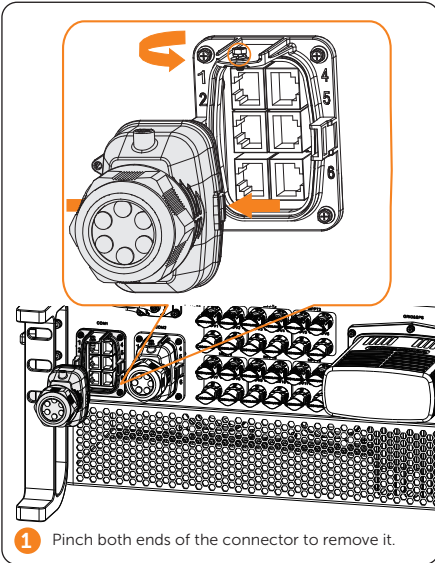
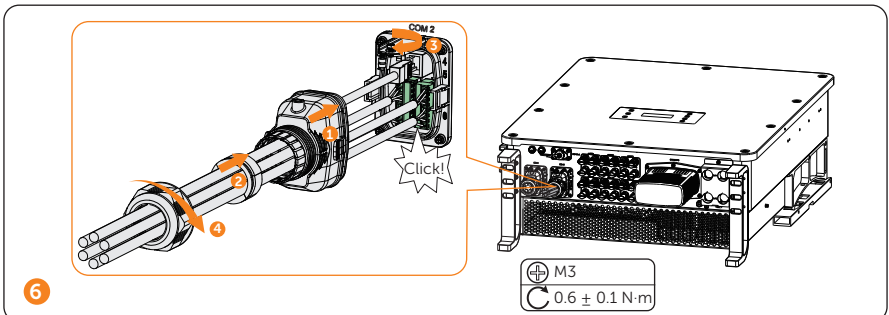
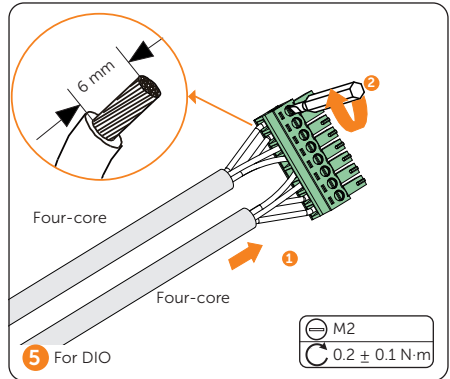
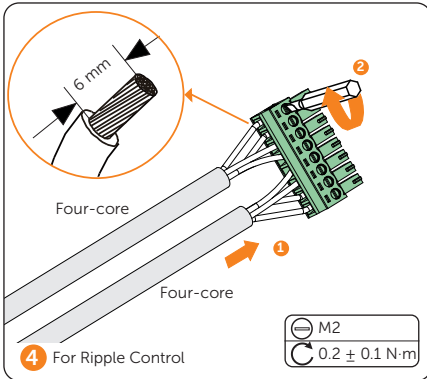
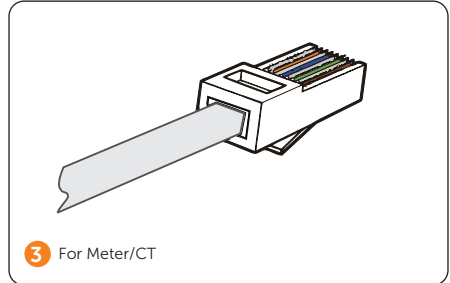
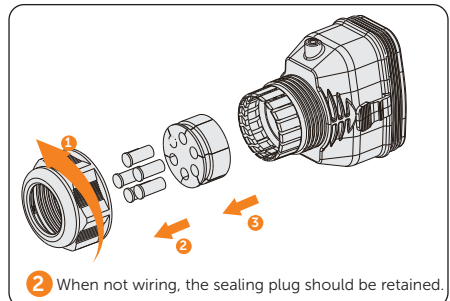
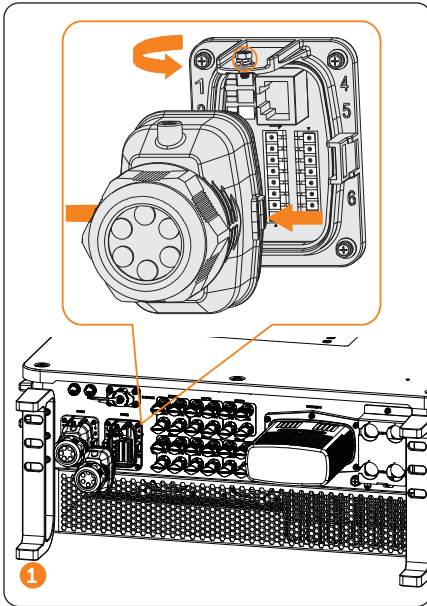
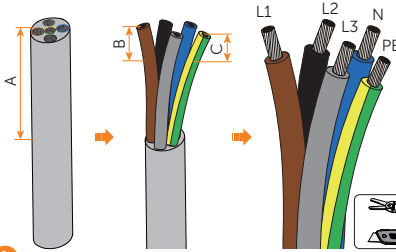


\* Connect the cables according to the actual function requirements.





## Making Grid and EPS Cables



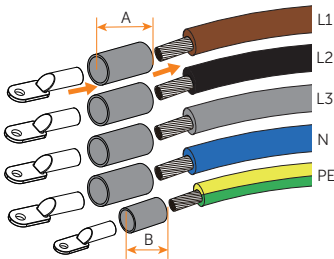
1 The figures in this section take the Grid cable for example.

### Grid cable

No.	Cable	Cross-sectional area	Strip length
A	Five-core cable	/	350~450 mm
B	L1/L2/L3/N	35 mm <sup>2</sup>	20~30 mm
C	PE	16 mm <sup>2</sup>	15~20 mm

### EPS cable

No.	Cable	Cross-sectional area	Strip length
A	Four-core cable	/	350~450 mm
B	L1/L2/L3/N	35 mm <sup>2</sup>	20~30 mm



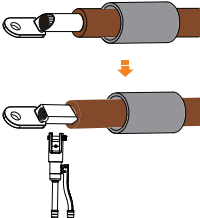
2

### Grid cable

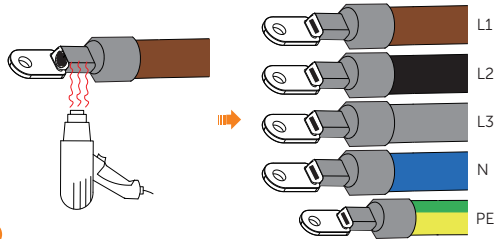
No.	Cable	Heat shrink tubing		Terminal
		Diameter	Length	
A	L1/L2/L3/N	Ø17~25 mm	50~60 mm	TLK35-8
B	PE	Ø10~15 mm	30~40 mm	TLK16-8

### EPS cable

No.	Cable	Heat shrink tubing		Terminal
		Diameter	Length	
A	L1/L2/L3/N	Ø17~25 mm	50~60 mm	TLK35-8



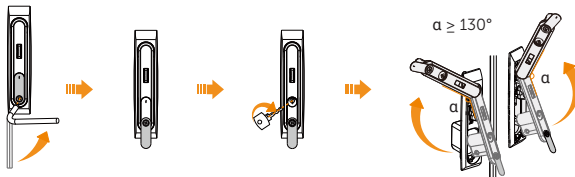
3 Take L1 wire for instance.



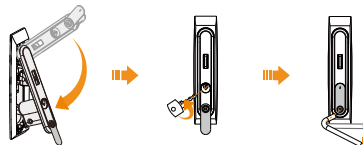
4

## Opening/Closing the Cabinet Doors

Open the door

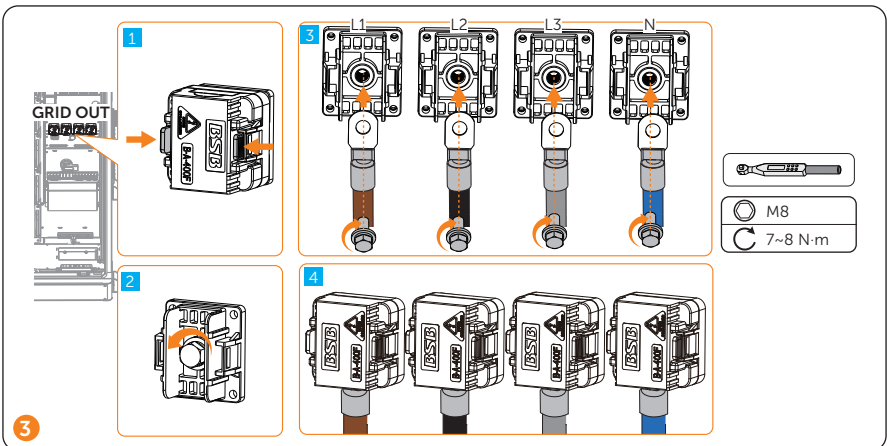
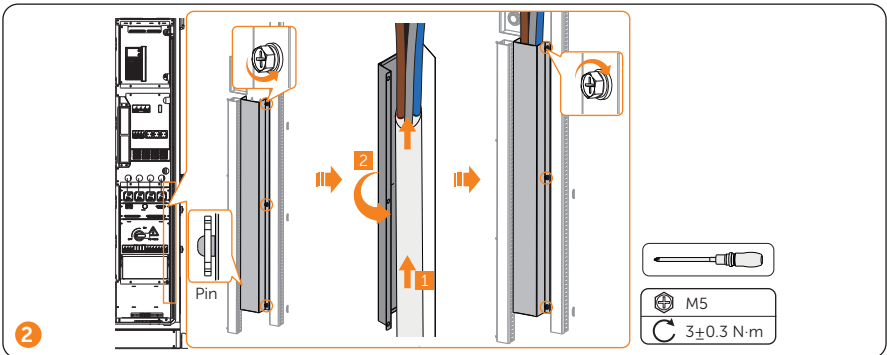
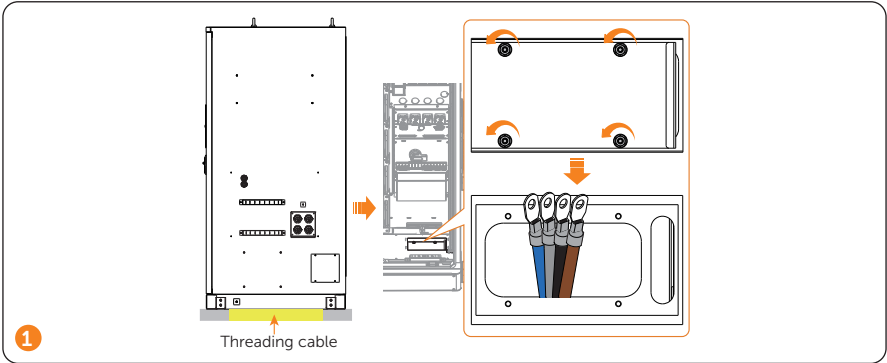


Close the door

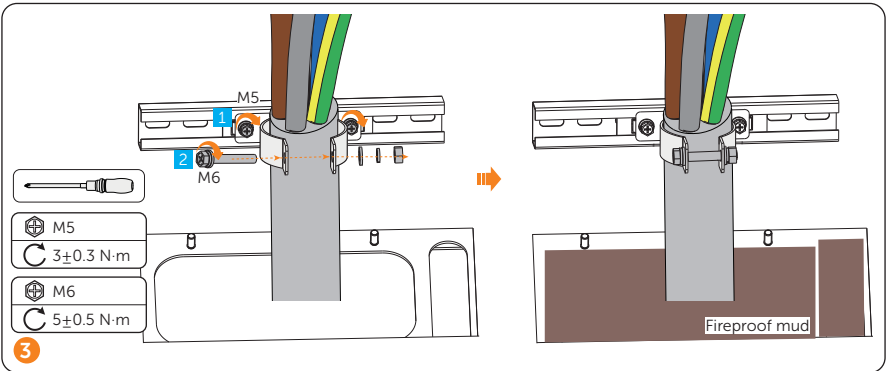
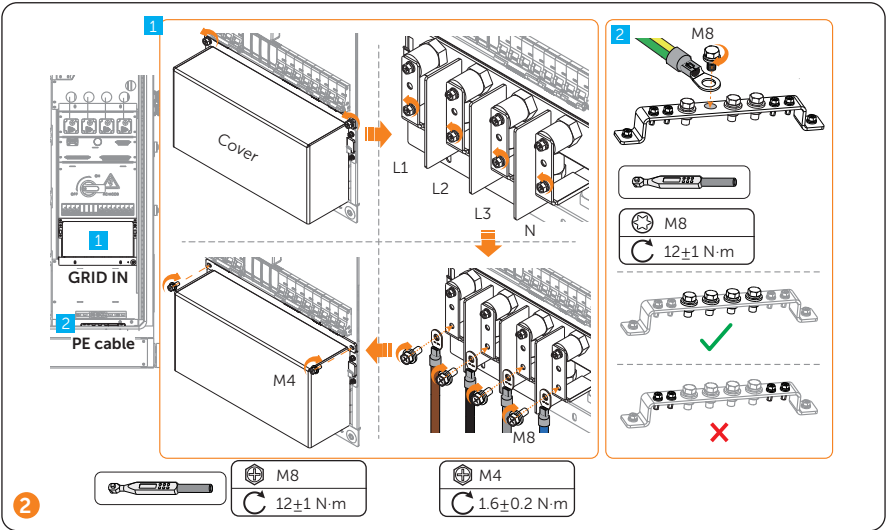
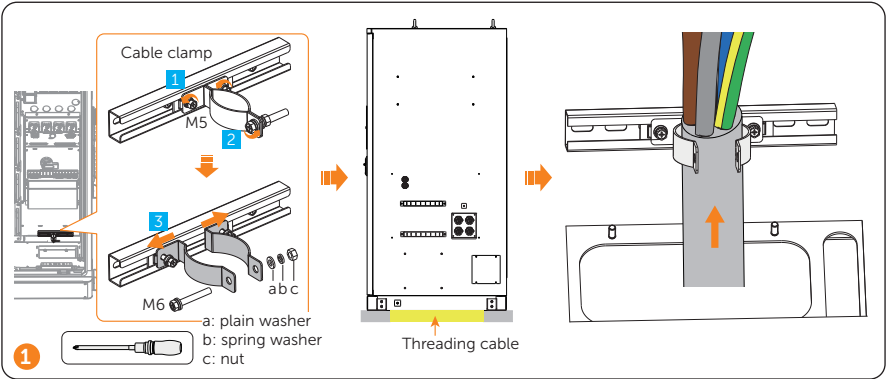


NOTICE!

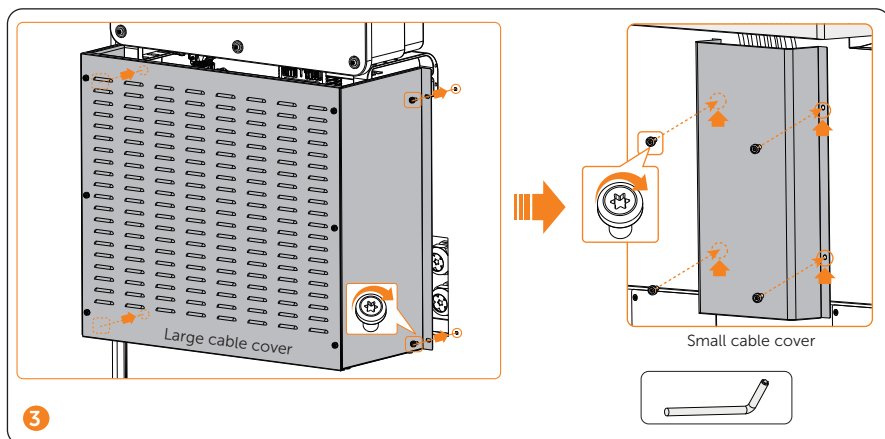
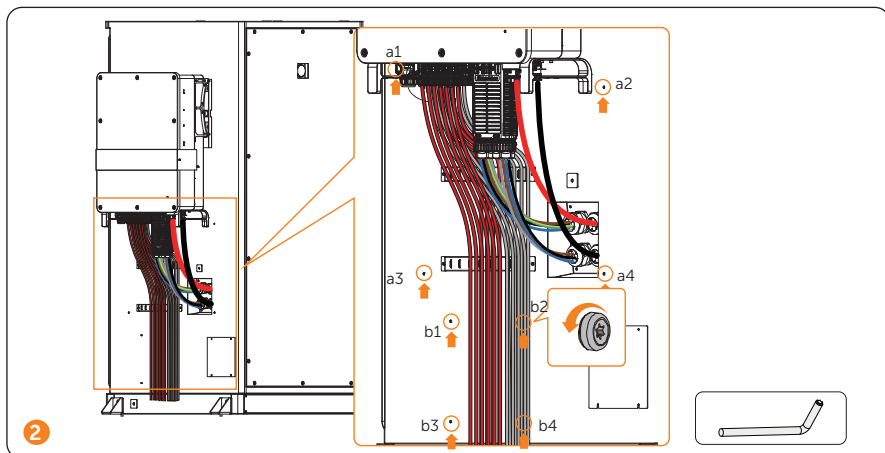
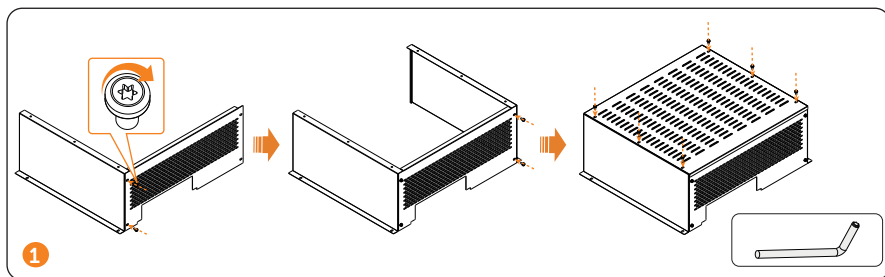
- Take out the underground electrical wiring which is buried beneath the ground.



# Grid Connection



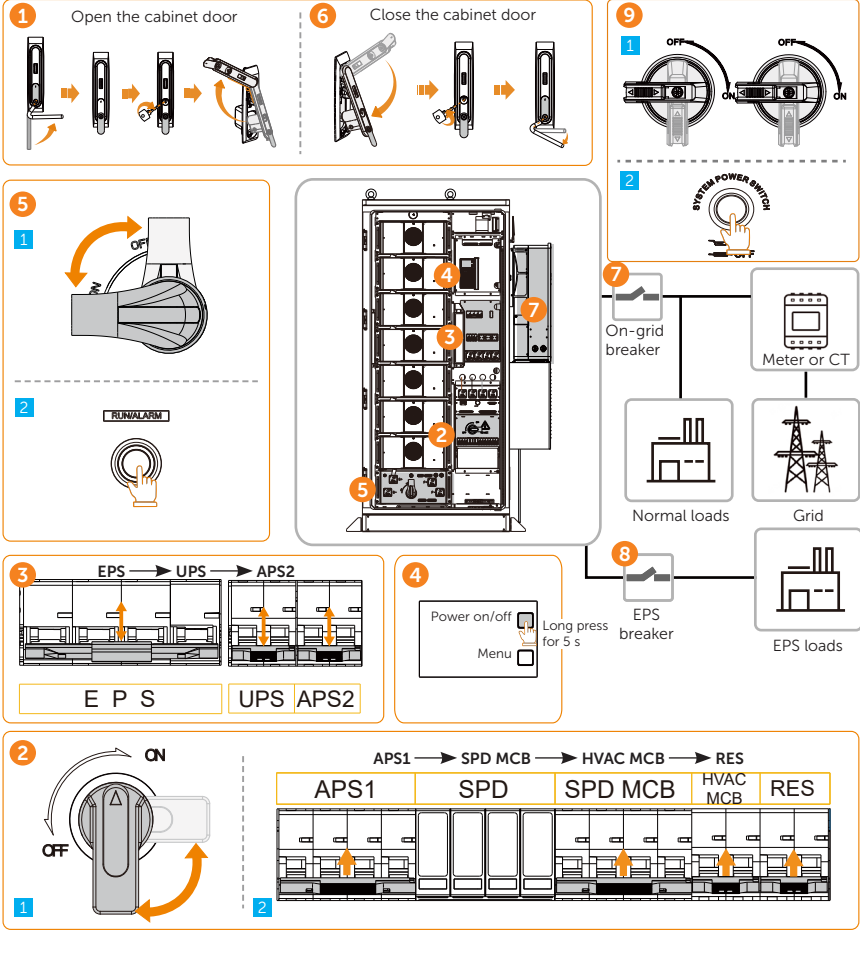
## Installation of Cable Cover



# Power on and off the System

Power on: 1 > 2 1 2 > 3 > 4 > 5 1 2 > 6 > 7 > 8 > 9 1 2

Power off: 9 2 > 7 > 8 > 9 1 > 1 > 3 > 5 2 1 > 4 > 2 2 1 > 6



Emergency power off

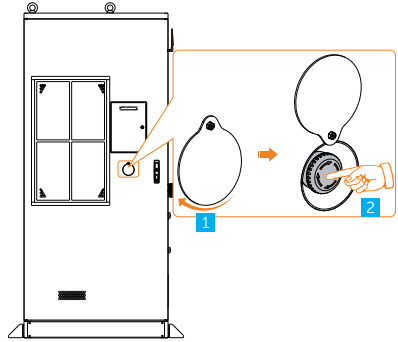
### WARNING!

- Do not press the emergency stop button except for emergencies.
- Some modules inside the cabinet may still have power after pressing the emergency stop button, therefore, non-professionals are not allowed to operate them.

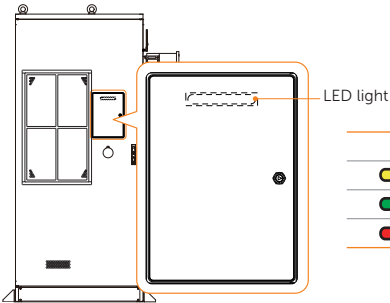
### NOTICE!

If it has been pressed, the emergency stop button must be reset before starting the equipment. The reset steps are shown as follows:

- a. Rotate the cover;
- b. Rotate the button according to the arrow direction shown on the button. Then the button will spring back to its original position.



## LED Indicators



LED light

LED light	Description
	Solid yellow In standby
	Solid green In operation
	Solid red System failure

## System Configuration

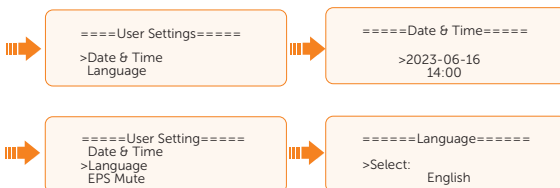
### Inverter Configuration

#### 1 User Settings

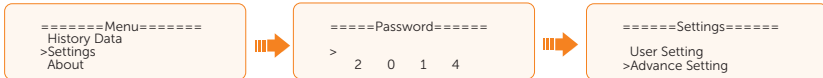


The initial password is 0 0 0 0 which should be changed for the consideration of account security.

- Data&Time, Language



## 2 Advance Settings



The initial password is 2014 which should be changed for the consideration of account security.

- Safety Code



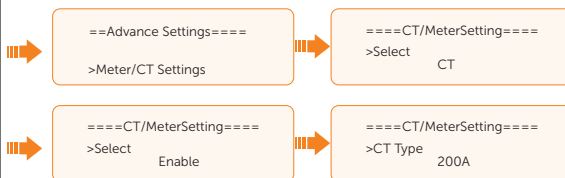
Set the corresponding safety standards according to different countries

- Export Control

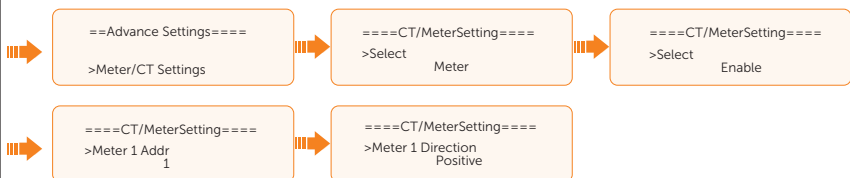


Set the control power to 0 for the countries with zero export control limit

- Meter / CT Setting-if CT is connected



- Meter / CT Setting-if Meter is connected



- Internal485 Settings



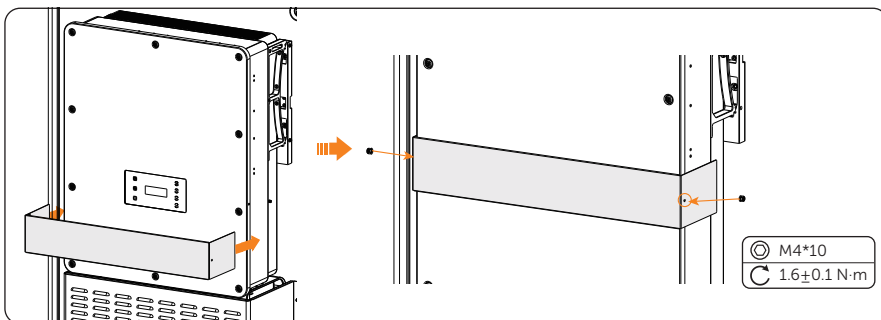
Set the Internal485 to EMS, check whether the baud rate is the same as EMS.

- Shut Down



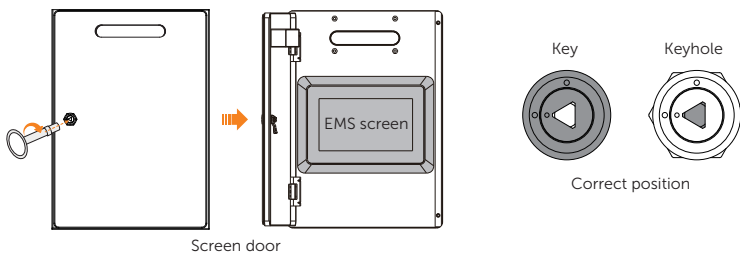
The Shut Down function needs to be set for areas with NS protection devices.

## Inverter Screen Cover Installation



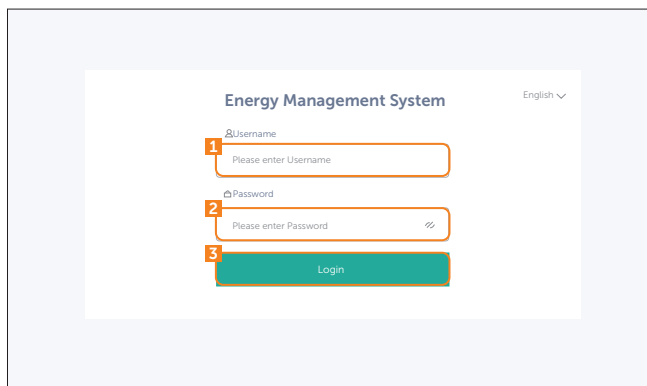
## EMS Configuration

### 1 Unlocking screen door



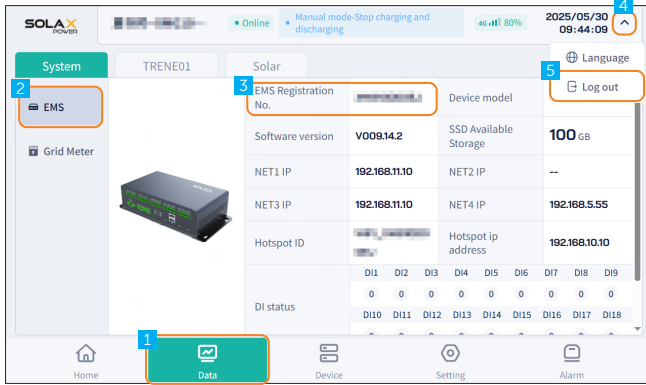
### 2 Log in to the screen

Username	Password	Remarks
user	123456 by default	The password can be modified on EMS1000 webpage.

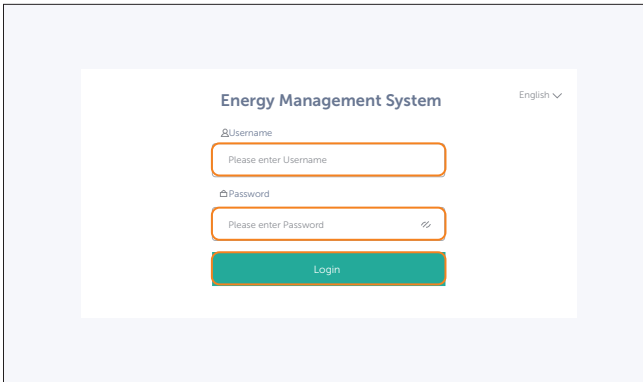


3 View EMS Registration No., and then Log out.

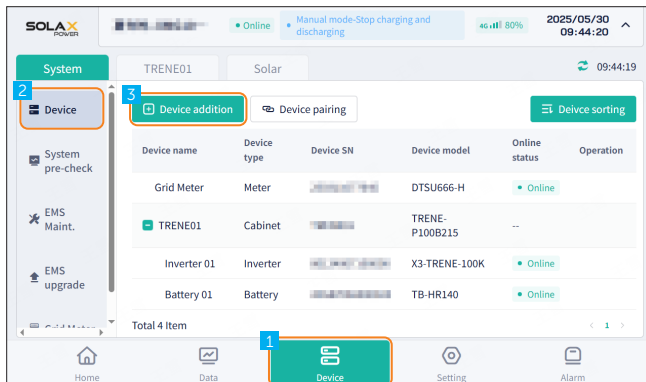
Username admin Password EMS Registration No.



4 Sign in an admin account

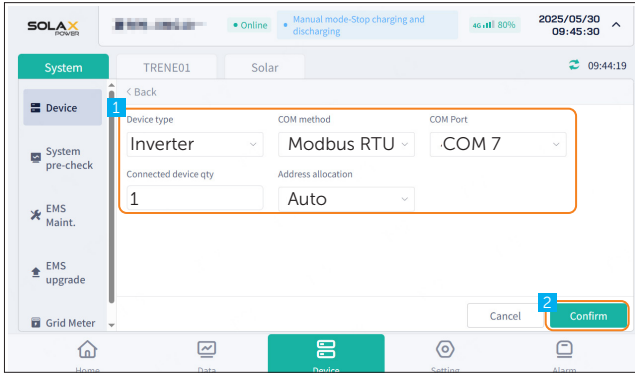


5 Add inverter

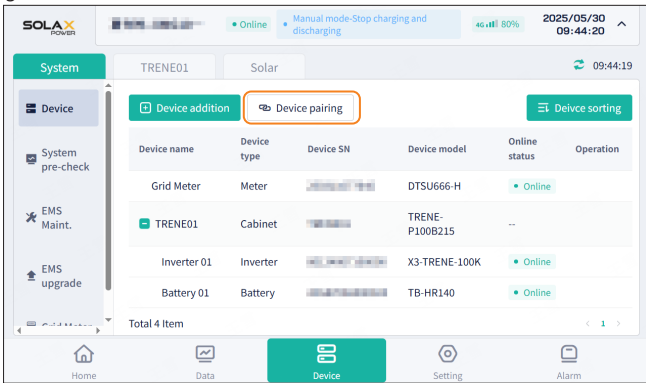


**6** Set inverter parameters

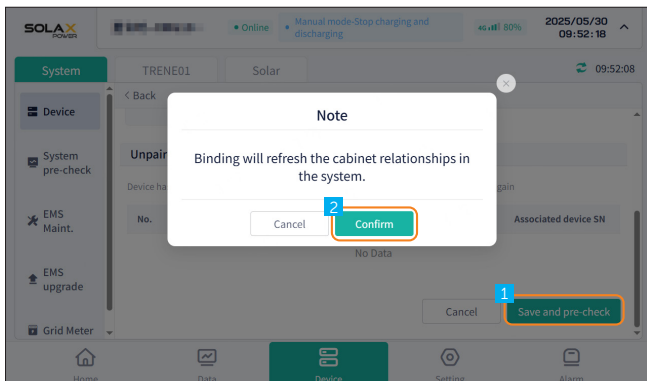
Device type	COM method	COM port	Connected device qty	Address allocation
Inverter	Modbus RTU	COM 7	1	Auto



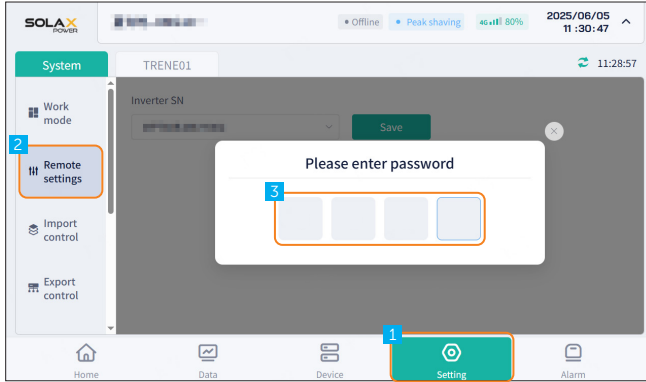
**7** Pairing device



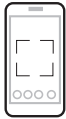
**8** Save and pre-check



- 9 Remote settings: The initial password is 2014. For your account security, change it after the first setting.



### SolaXCloud Download



SolaXCloud

Scan the QR code to download SolaXCloud App. Follow the tutorial or online documents on the SolaXCloud App to complete the configuration.

## Warranty Registration

Please visit the website: <https://www.solaxcloud.com/user-center/> to complete the warranty registration. For more detailed warranty terms, please visit SolaX official website: [www.solaxpower.com](http://www.solaxpower.com).



**SolaX Power Network Technology (Zhejiang) Co., Ltd.**

Add.: No. 278, Shizhu Road, Chengnan Sub-district, Tonglu County,  
Hangzhou, Zhejiang, China  
E-mail: [info@solaxpower.com](mailto:info@solaxpower.com)