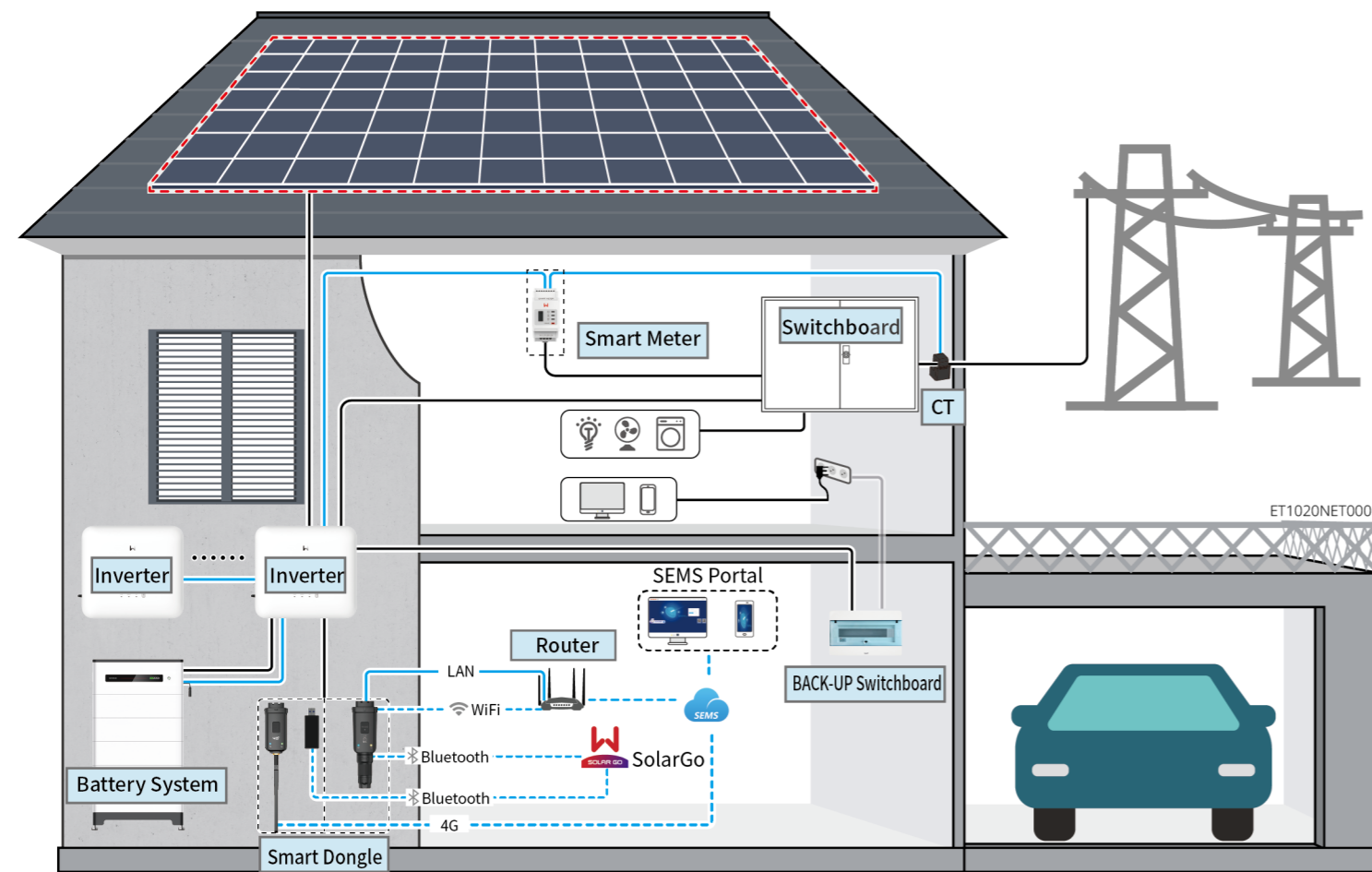


#### ⚠ WARNING

The information in this quick guide is subject to change due to product updates or other reasons. This guide cannot replace the product labels or the safety precautions in the user manual unless otherwise specified. All descriptions in the manual are for guidance only.

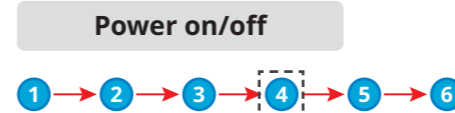
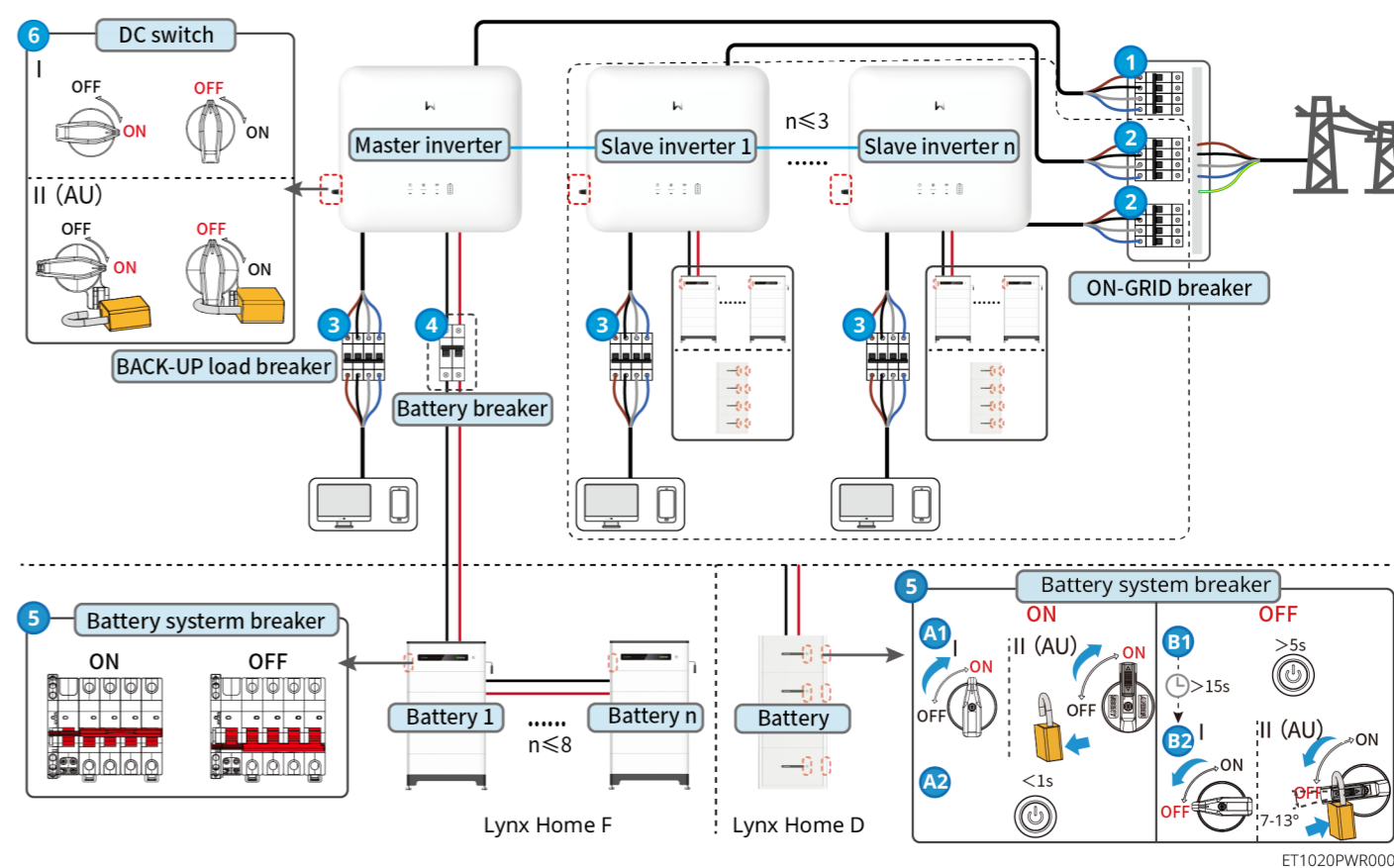
## 01 Networking



Device	Model	Description
Inverter	GW6000-ET-20, GW8000-ET-20, GW9900-ET-20, GW10K-ET-20, GW12K-ET-20, GW15K-ET-20	A maximum of 4 inverters can be connected in a parallel system. Inverter firmware requirements for parallel connections: <ul style="list-style-type: none"> <li>Consistent firmware version</li> <li>ARM version: 01.389 or above</li> <li>DSP version: 01.15 or above</li> </ul>
Battery system	Lynx Home F (G1) Lynx Home F (G1 Plus+) LX F6.6-H LX F9.8-H LX F13.1-H LX F16.4-H	Lynx Home D LX D5.0-10 <ul style="list-style-type: none"> <li>A maximum of 8 battery systems can be clustered in a system.</li> <li>Do not mix connect battery systems of different versions.</li> </ul>

Device	Model	Description
Smart Meter (Optional)	<ul style="list-style-type: none"> <li>GM3000</li> <li>GM330</li> </ul>	<ul style="list-style-type: none"> <li>The inverter has a built-in smart meter, and CT cannot be changed. CT ratio: 90A/90mA</li> <li>GM3000: GM3000 and the CT, which cannot be replaced, are included in the inverter package. CT ratio: 120A/40mA.</li> <li>CM330: order the CT for GM330 from GoodWe or other suppliers. CT ratio: nA/5A.                             <ul style="list-style-type: none"> <li>nA: CT primary input current, n ranges from 200 to 5000.</li> <li>5A: CT Secondary input current.</li> </ul> </li> </ul>
Smart Dongle	<ul style="list-style-type: none"> <li>WiFi/LAN Kit-20</li> <li>4G Kit-EC or 4G Kit-AU</li> <li>Ezlink3000</li> </ul>	<ul style="list-style-type: none"> <li>In single scenarios, please use WiFi/LAN Kit-20, 4G Kit-EC, or 4G Kit-AU modules.</li> <li>In parallel scenarios, the EzLink 3000 must be connected to the master inverter. Do not connect any communication module to the slave inverters. The firmware version of EzLink should be 04 or above.</li> </ul>

## 02 Power On/Off



④ : Install or not based on local laws and regulations.

### 03 Installations

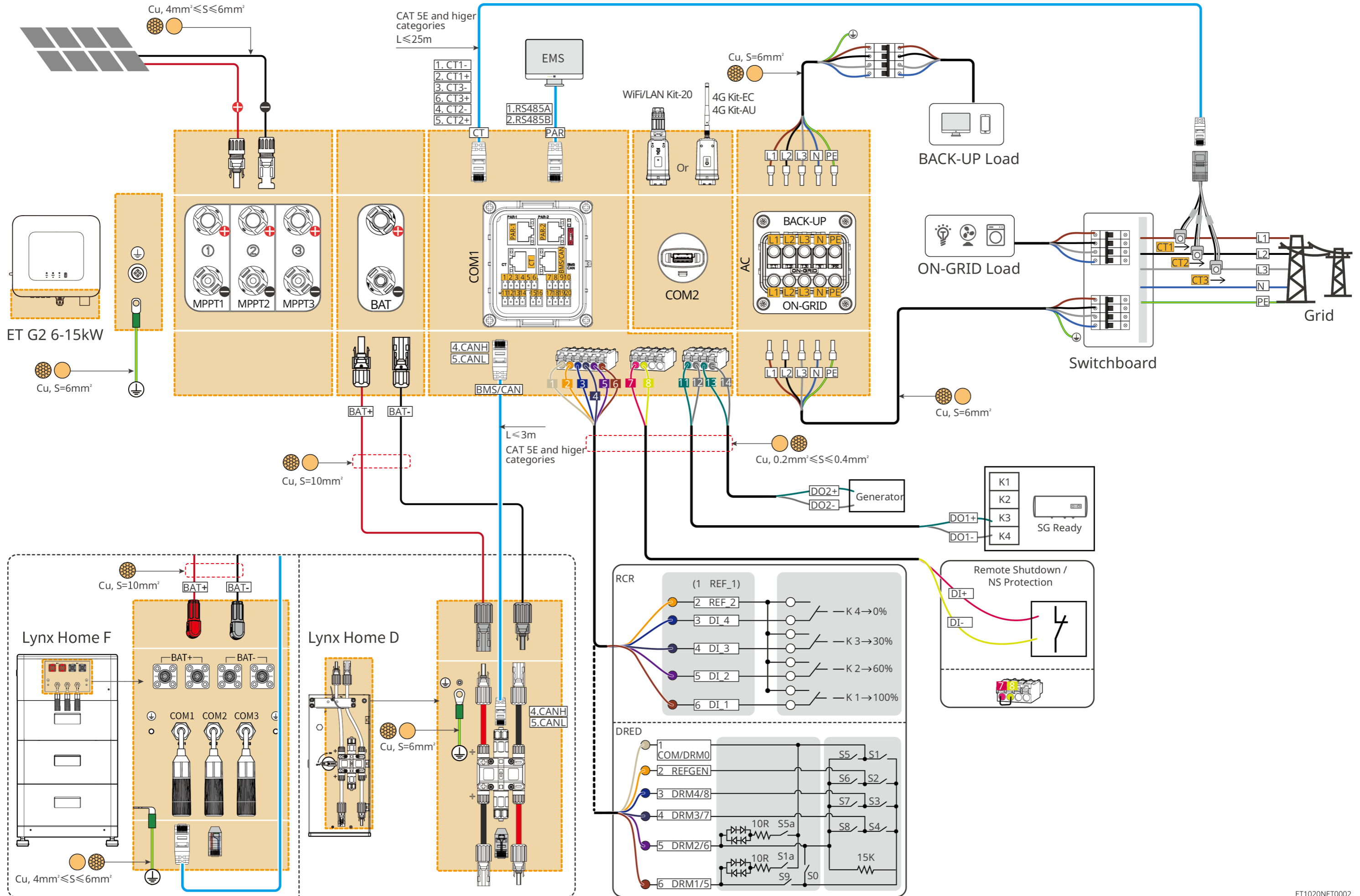
Steps	1 Installation	2 PE	3 PV	4 Battery	5 AC	6 COM	7 Communication module		
Inverter							Bluetooth Module	WiFi/LAN Kit-20	Ezlink3000
Tools	<p>1 D: 80mm φ: 8mm</p> <p>2 M5 1.2-2N·m</p>	M5 1.5-2N·m	<p>Recommend: PV-CZM-61100</p>	<p>Recommend: YQK-70</p>	M5 1.5-2N·m Or		4G Kit-EC 4G Kit-AU		

Steps	1 Installation				2 PE	3 Battery			4 COM		
Battery	Lynx Home F (G1)	Lynx Home F (G1 Plus+)	Lynx Home D		Lynx Home F	Lynx Home D	Lynx Home F (G1)	Lynx Home F (G1 Plus+)	Lynx Home D	Lynx Home F	Lynx Home D
Tools	<p>Ground</p> <p>Wall</p> <p>1 D: 80mm φ: 10mm</p> <p>2 ST5.5 4N·m</p> <p>3 M5 4N·m</p> <p>4 M5 4N·m</p> <p>A1 D: 60mm φ: 15mm</p> <p>A2 M12 45N·m</p> <p>B1 D: 60mm φ: 8mm</p> <p>B2 M6 5N·m</p> <p>B3 M6 5N·m</p> <p>B4 M5 4N·m</p>				M6 6-7N·m	M5 4N·m	Recommend: YQK-70	Recommend: YQK-70	Recommend: YQK-70		

Steps	1 Installation		2 Cable Connections		3 Power	4 Commissioning		
Smart meter	GM3000	GM330	GM3000	GM330	AC breaker	  SolarGo APP	  SEMS Portal APP	  SEMS Portal WEB

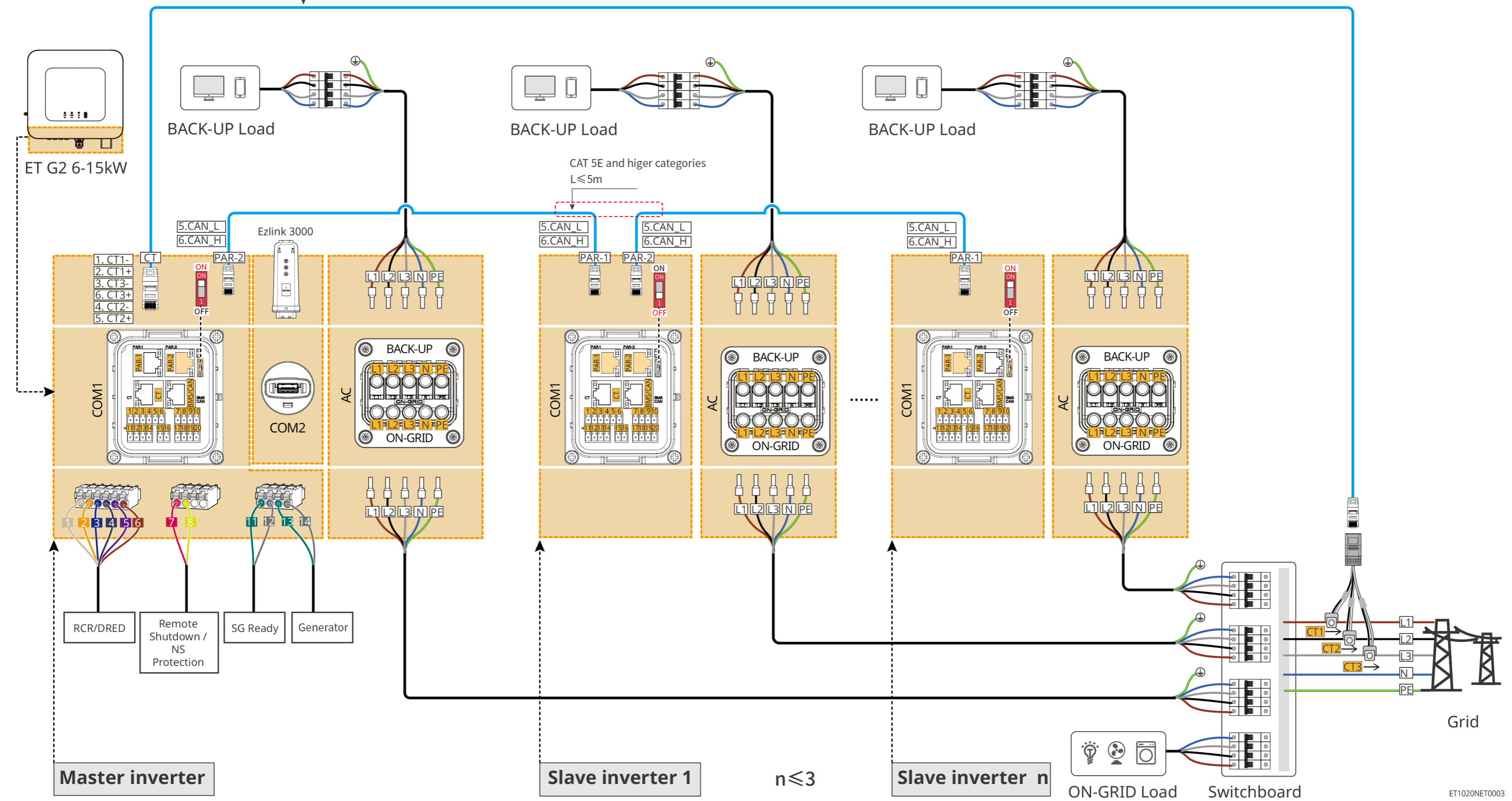
# 04 Wiring Diagram

ET G2 6-15kW (single) + Lynx Home F + WiFi/LAN or 4G

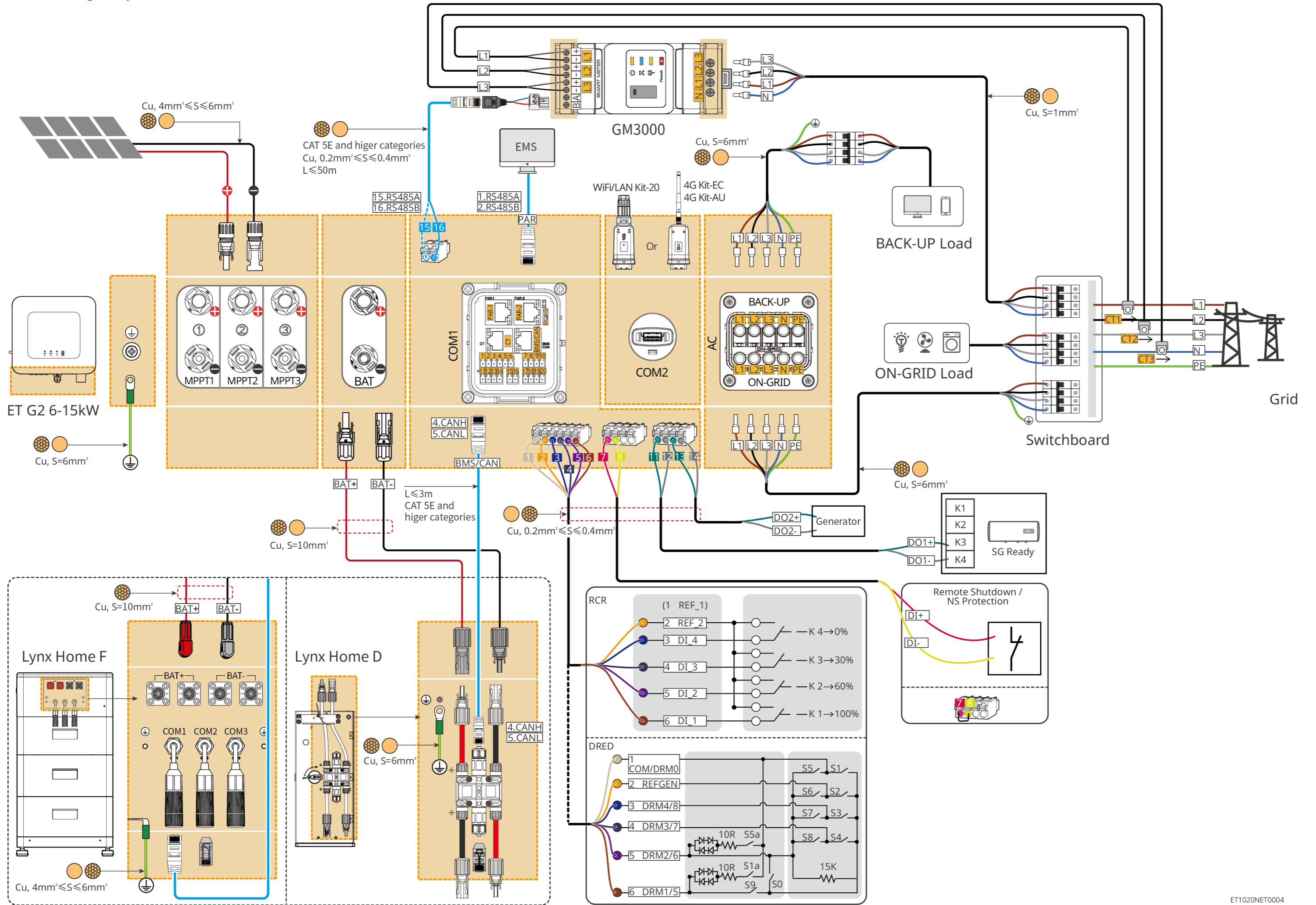


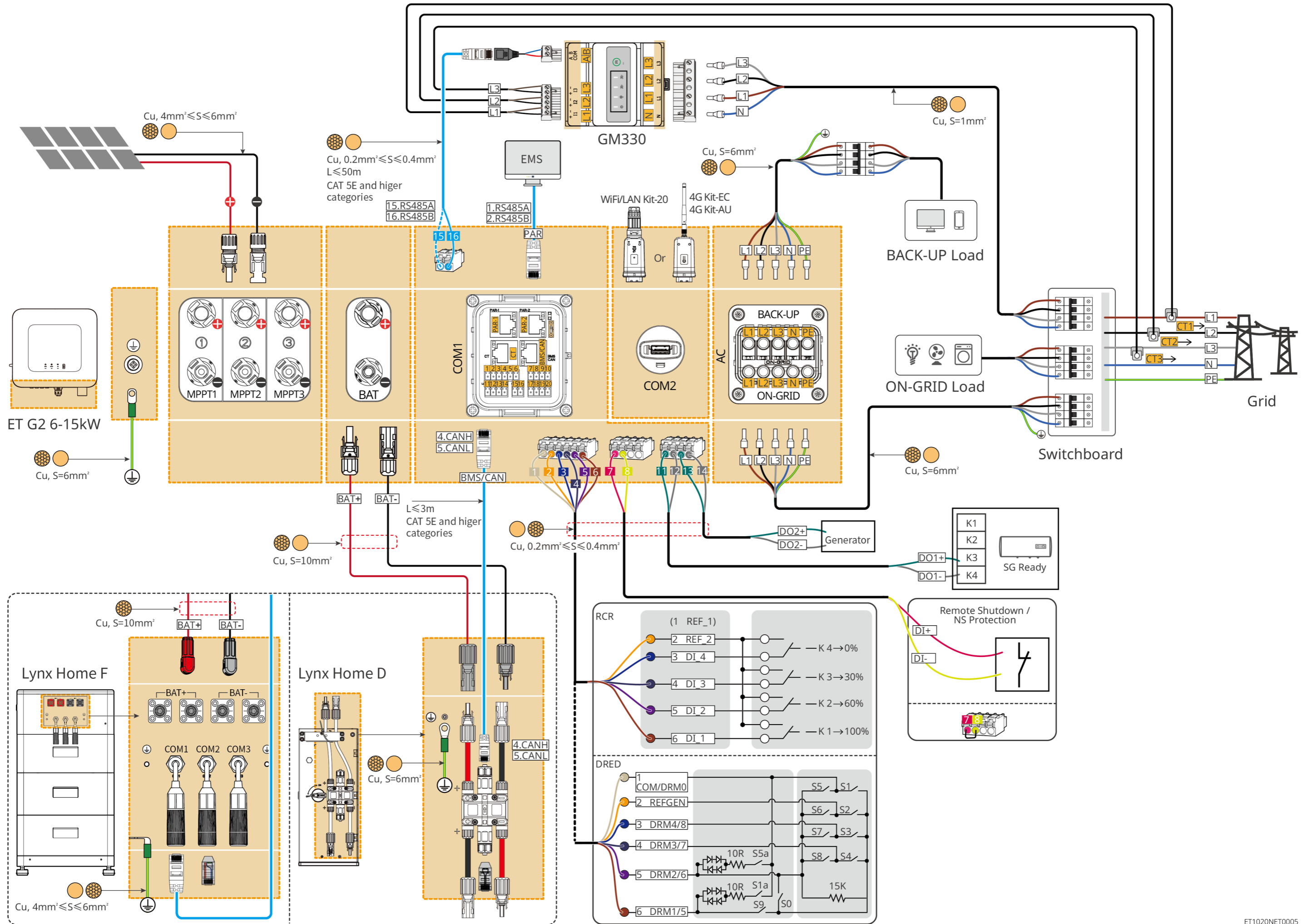
ET G2 6-15kW (parallel connected) + Ezlink3000

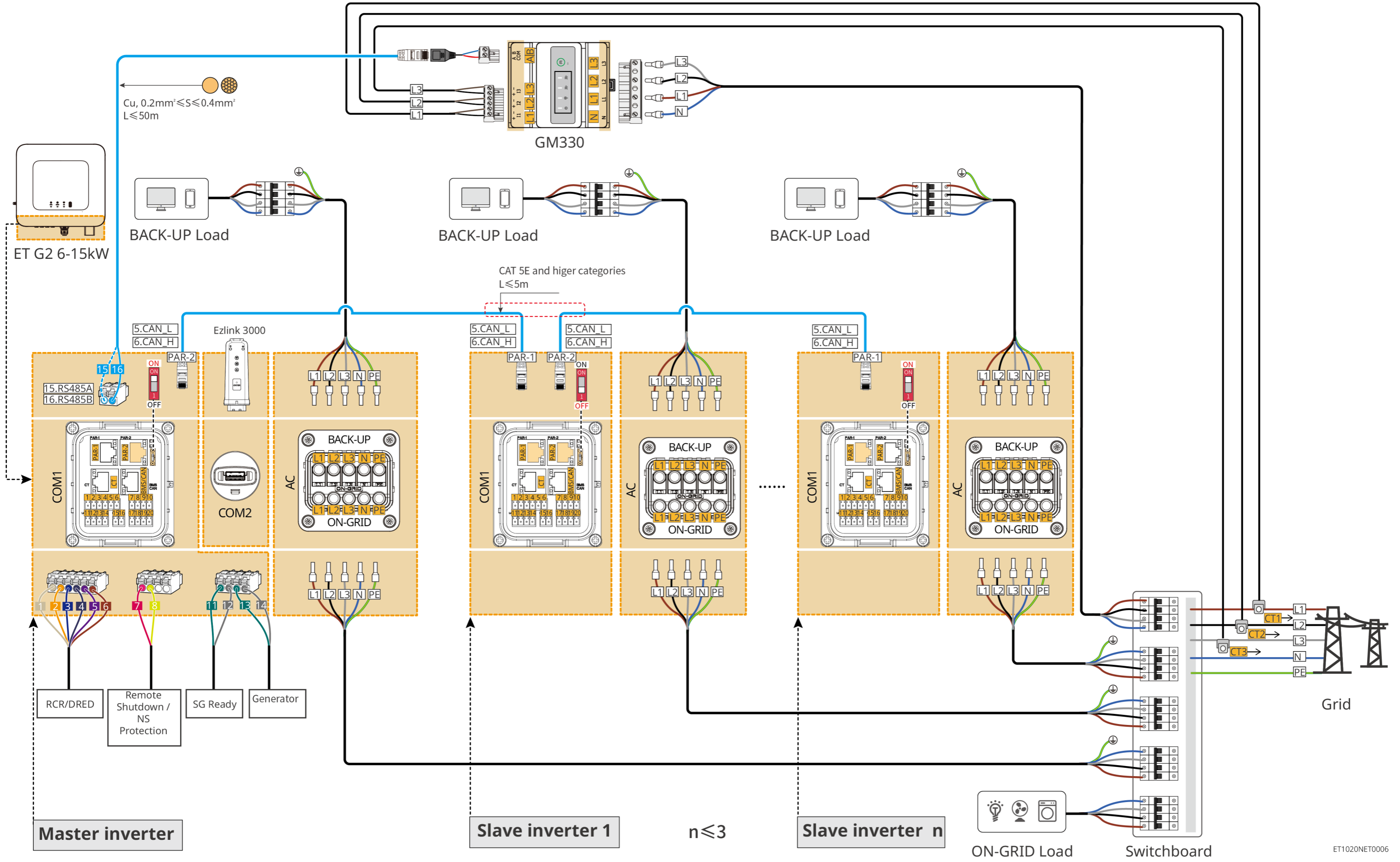
CAT 5E and higher categories  
L ≤ 25m



ET1020NET0003

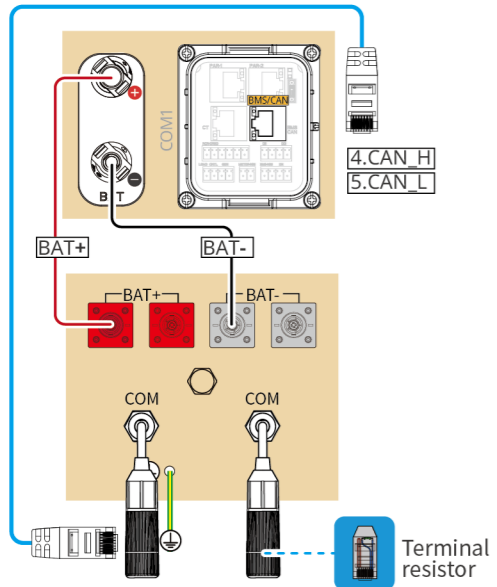




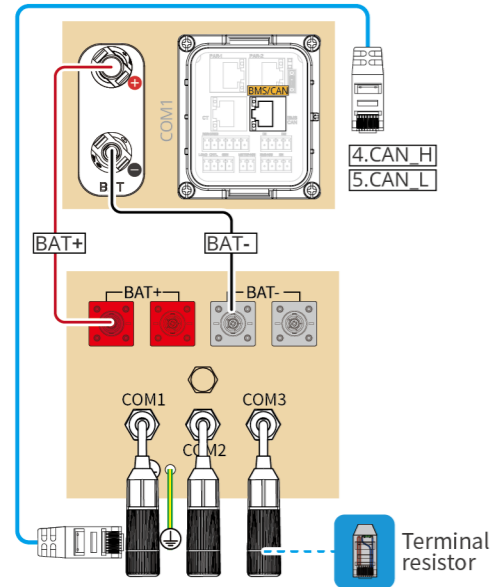


# Battery System Wiring Diagram

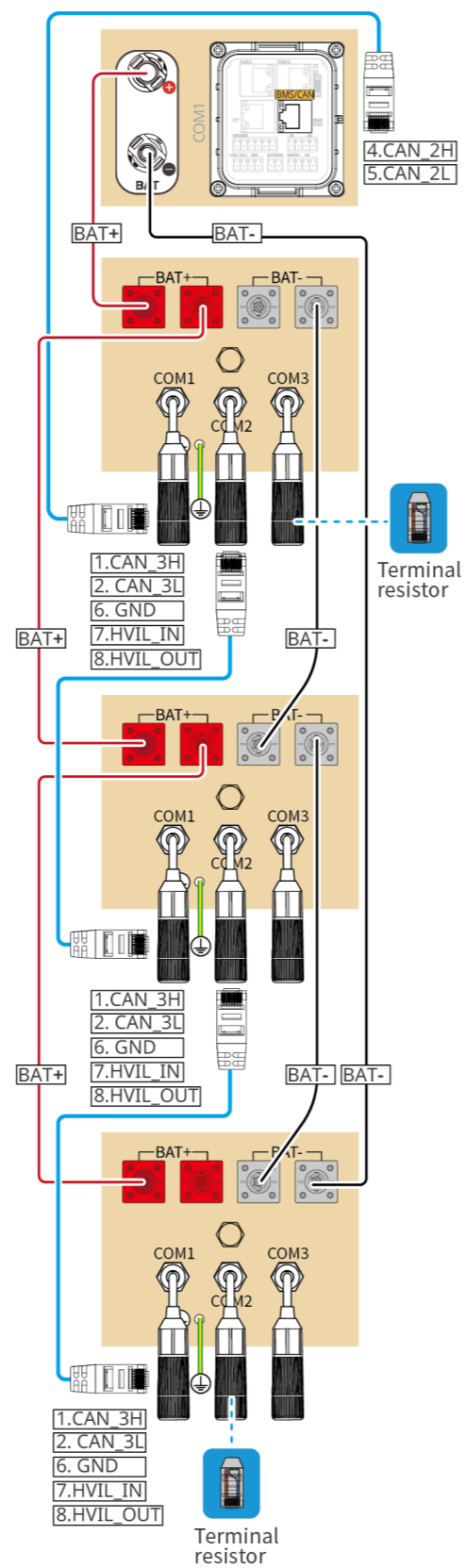
Lynx Home F (G1)



Lynx Home F (Plus+)

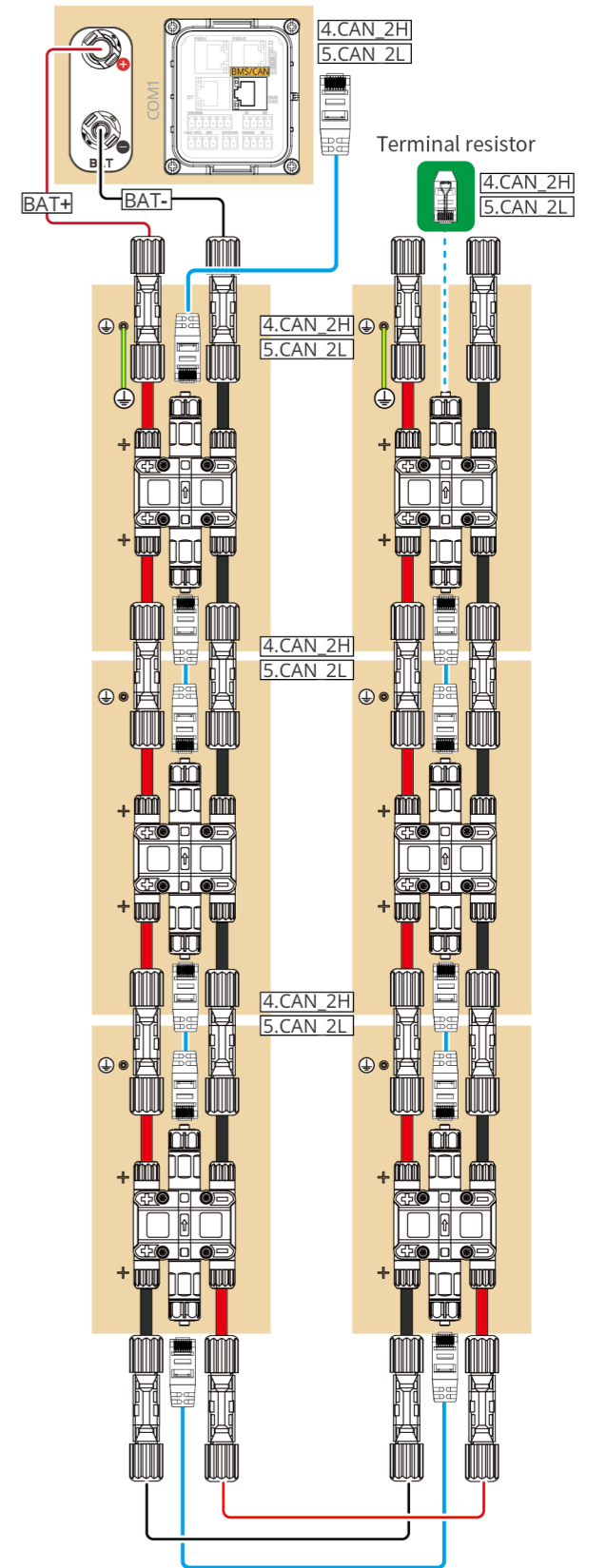
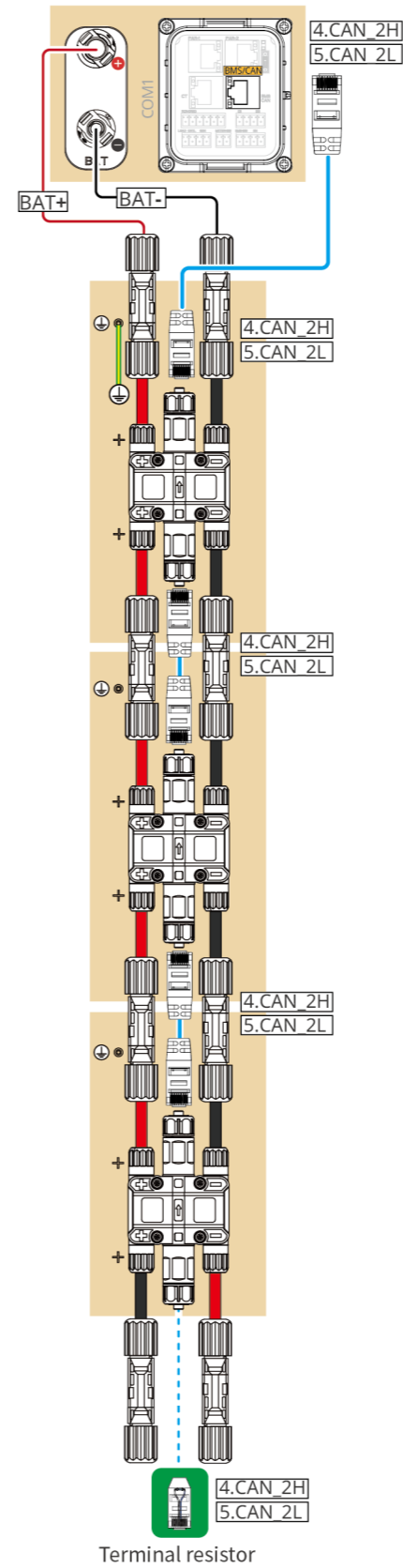


Lynx Home F (Plus+)



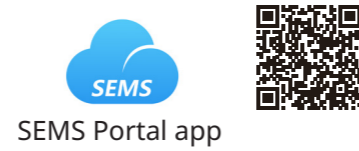
— CAT 5E and higher categories

Lynx Home D





## 05 Equipment Commissioning

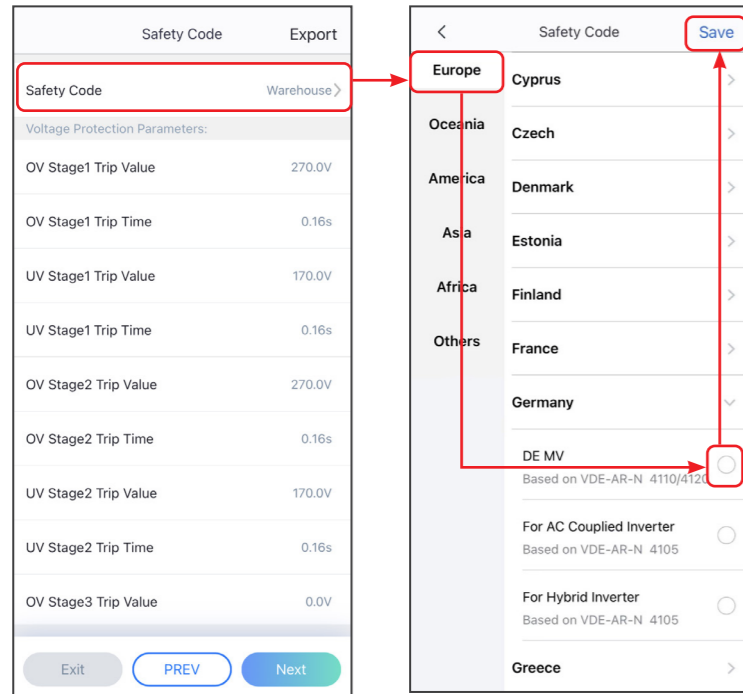


In parallel scenarios, the software version of SolarGo app should be 5.4.0 or above.  
Follow the prompts to connect the device.

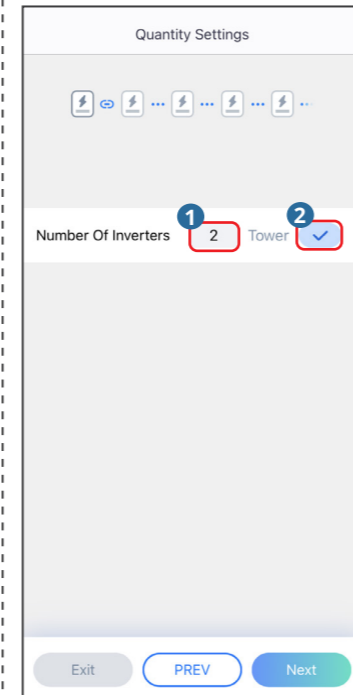
### Quick Settings

Tap **Home** > **Settings** > **Quick Settings** to complete quick settings step by step.  
Installer password: goodwe2010

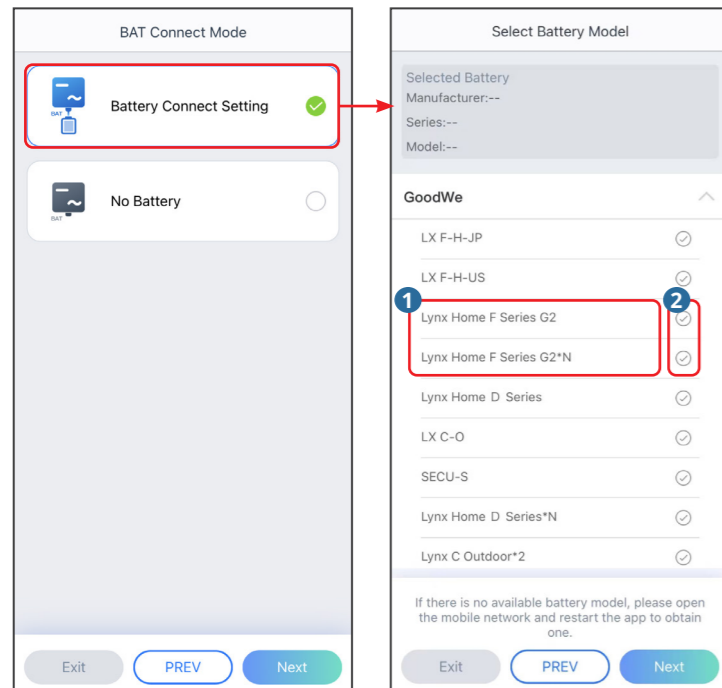
### Setting the Safety Code



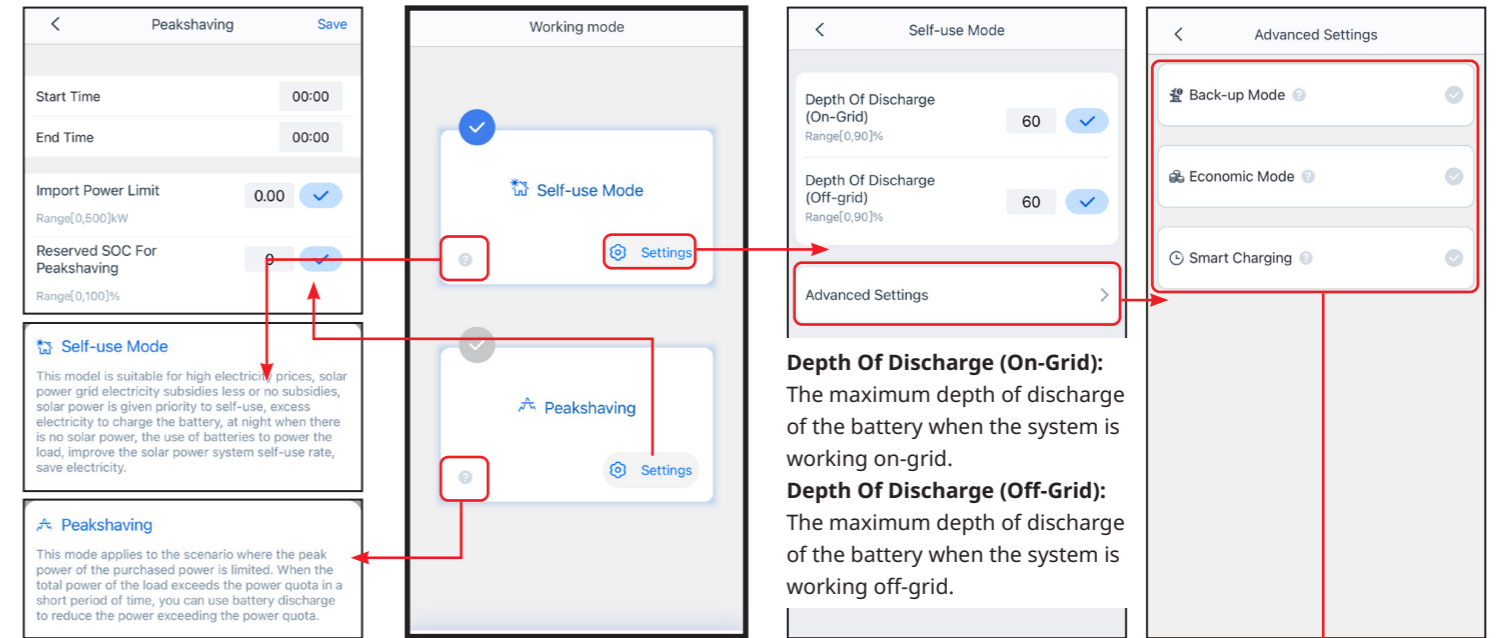
### Setting Inverter Quantity (Only For Parallel Connections)



### Setting the BAT Connect Mode

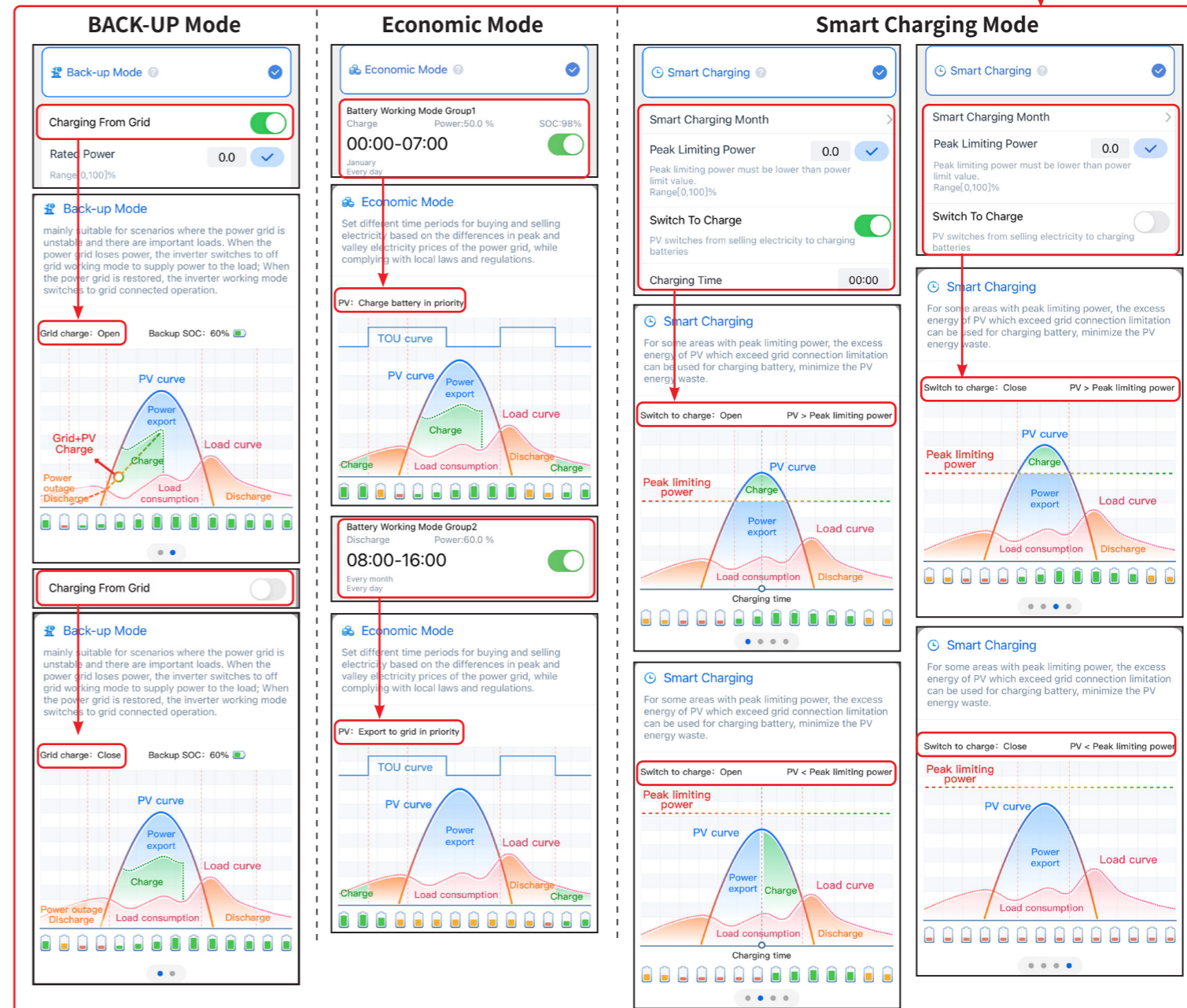


## Setting the Working Mode



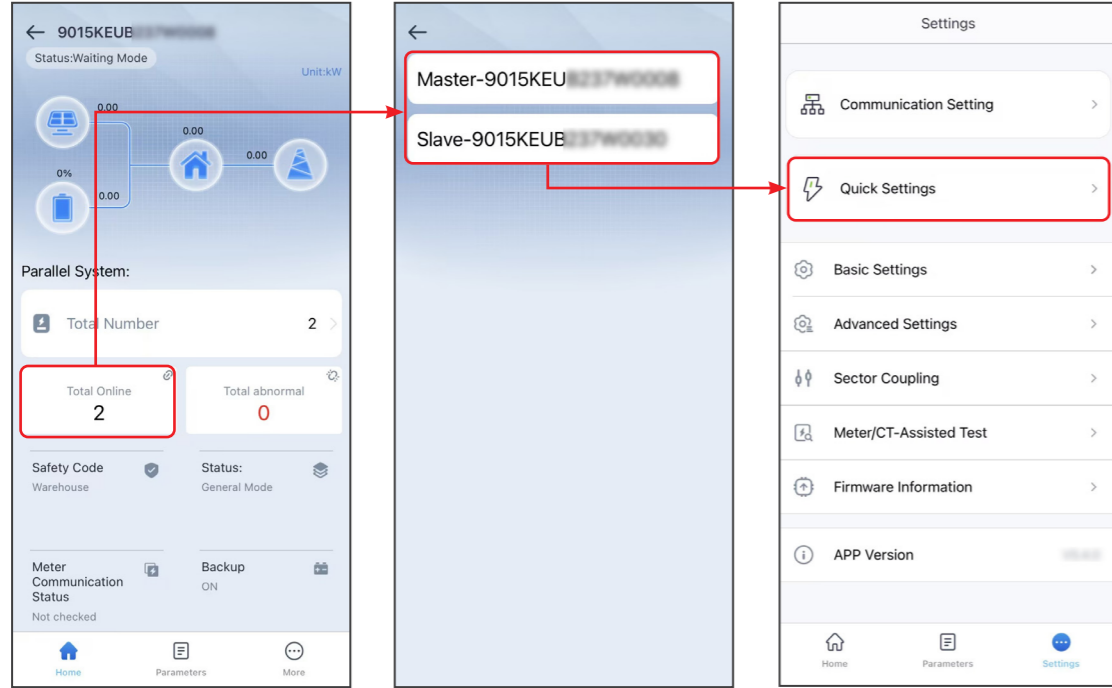
**Depth Of Discharge (On-Grid):**  
The maximum depth of discharge of the battery when the system is working on-grid.

**Depth Of Discharge (Off-Grid):**  
The maximum depth of discharge of the battery when the system is working off-grid.



## Setting Batteries Of Each Inverters (Only For Parallel Connections)

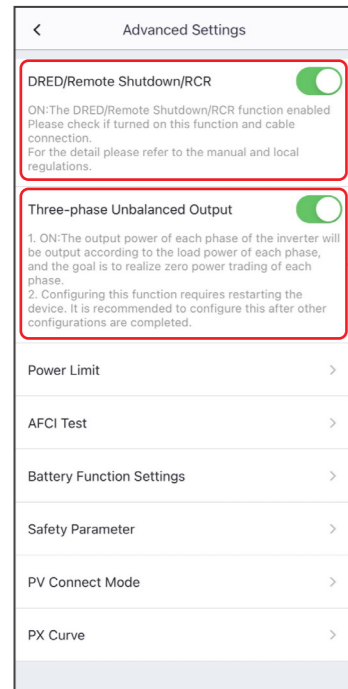
Follow the prompts to set the battery model and connection mode of each inverter.



## Setting the Advanced Parameters

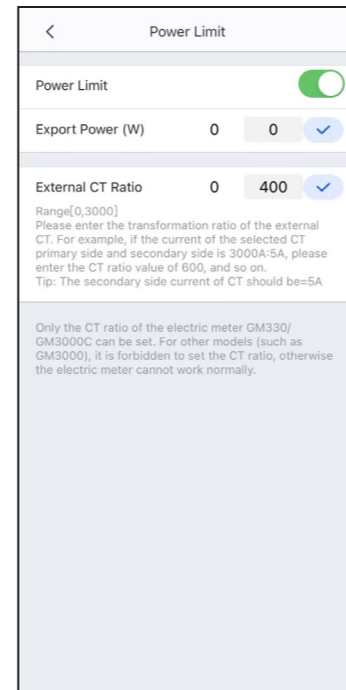
Tap Home > Settings > Advanced Settings to set the following functions.

### Setting DRED/Remote Shutdown/RCR or Three-phase Unbalanced Output Function (Optional)



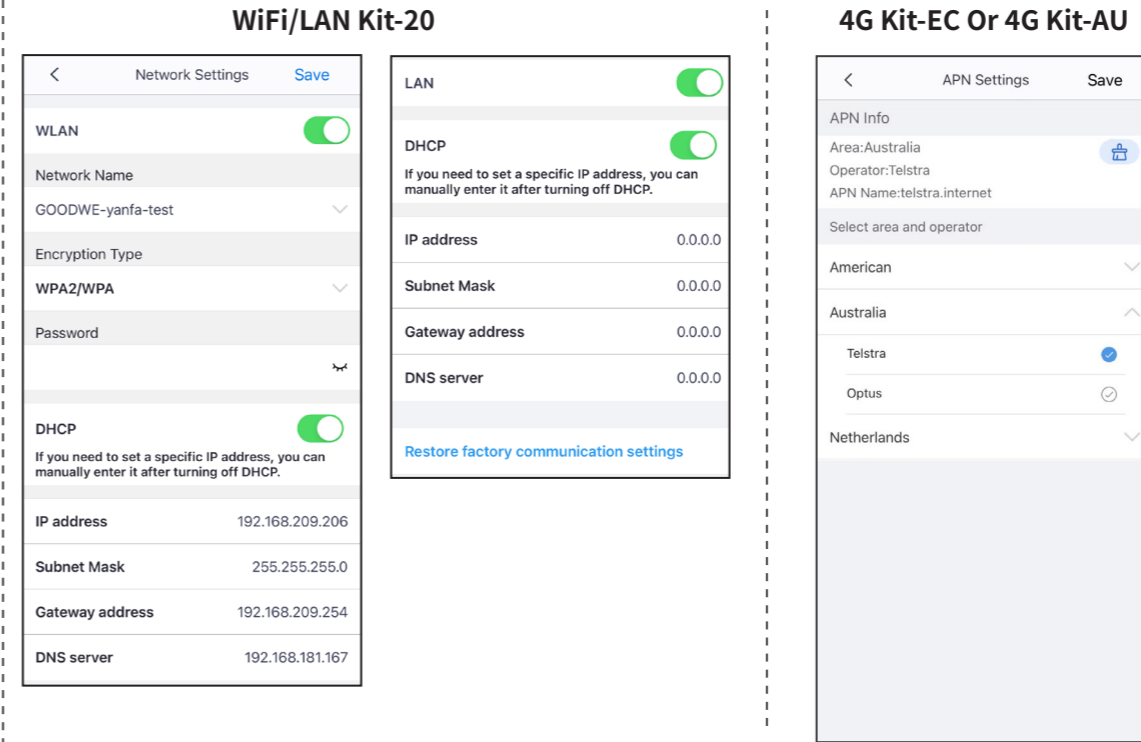
Enable **Three-phase Unbalanced Output** when the utility grid company adopts phase separate billing.

### Setting the Power Limit Function



## Configuring the Network

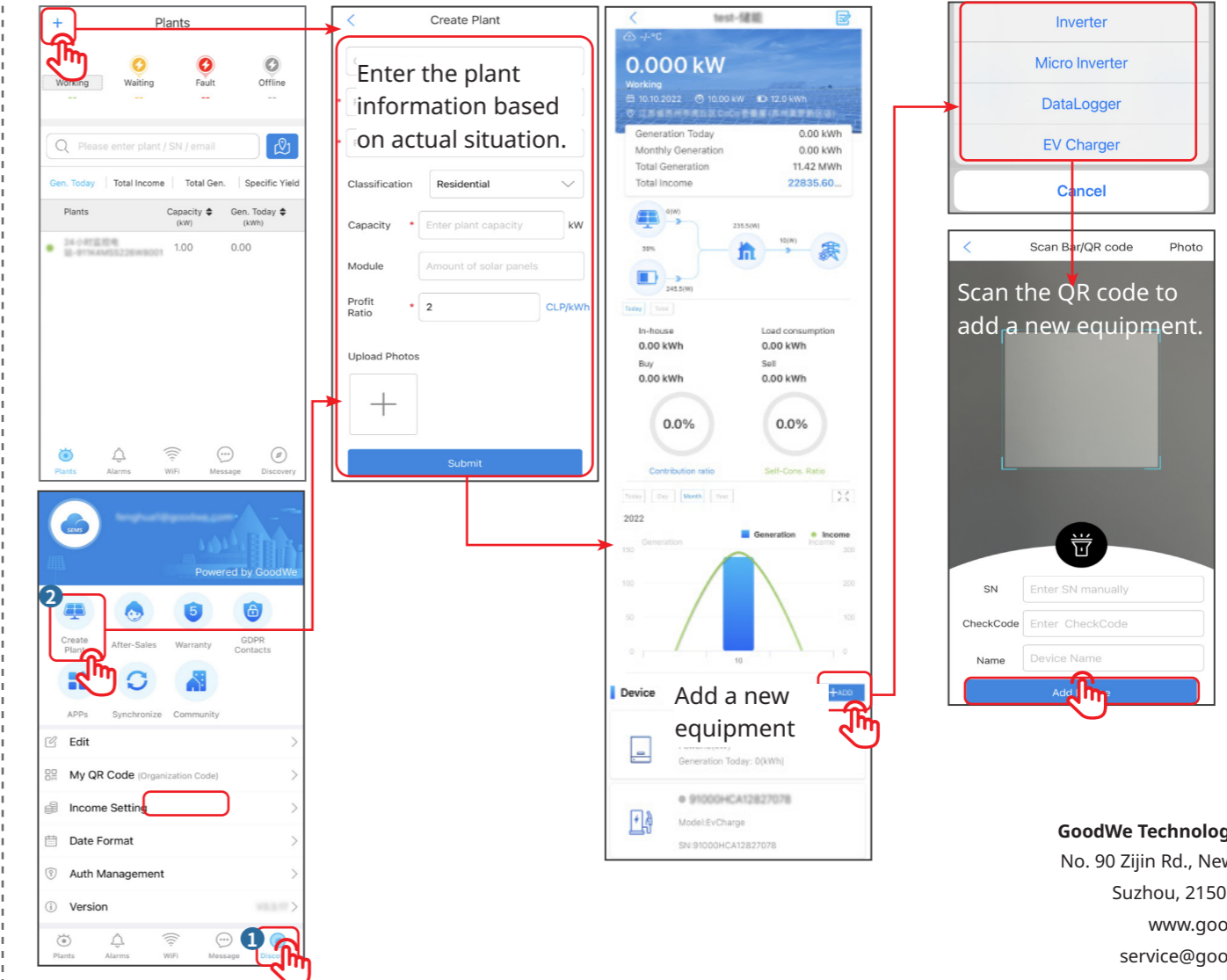
Tap Home > Settings > Communication Setting to set network parameters.



After configuring the APN, unplug the Bluetooth module and insert the 4G Kit EC or 4G Kit AU module.

## Creating a Power Plant

Create power plants and add equipments via SEMS Portal app.



**GoodWe Technologies Co., Ltd.**  
No. 90 Zijin Rd., New District,  
Suzhou, 215011, China  
www.goodwe.com  
service@goodwe.com